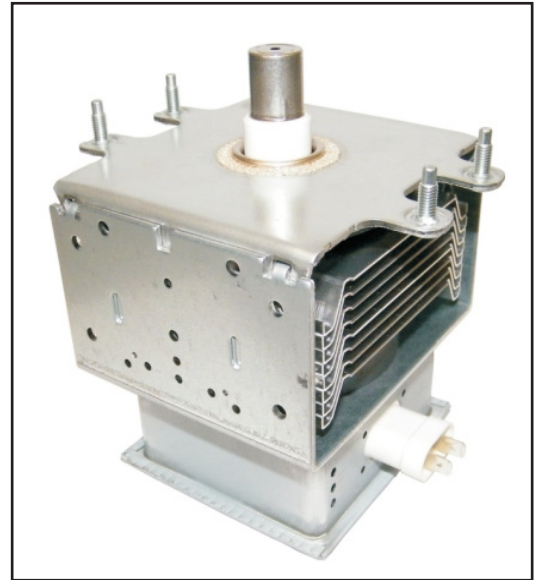


## Description:

The 2M121A-53 (IL) and the 2M121A-57 (NIL) are (CW) magnetrons that deliver 1.45 kW continuous output power.

- 1.45 kW CW power output
- Force Air-cooled anode
- Probe Output



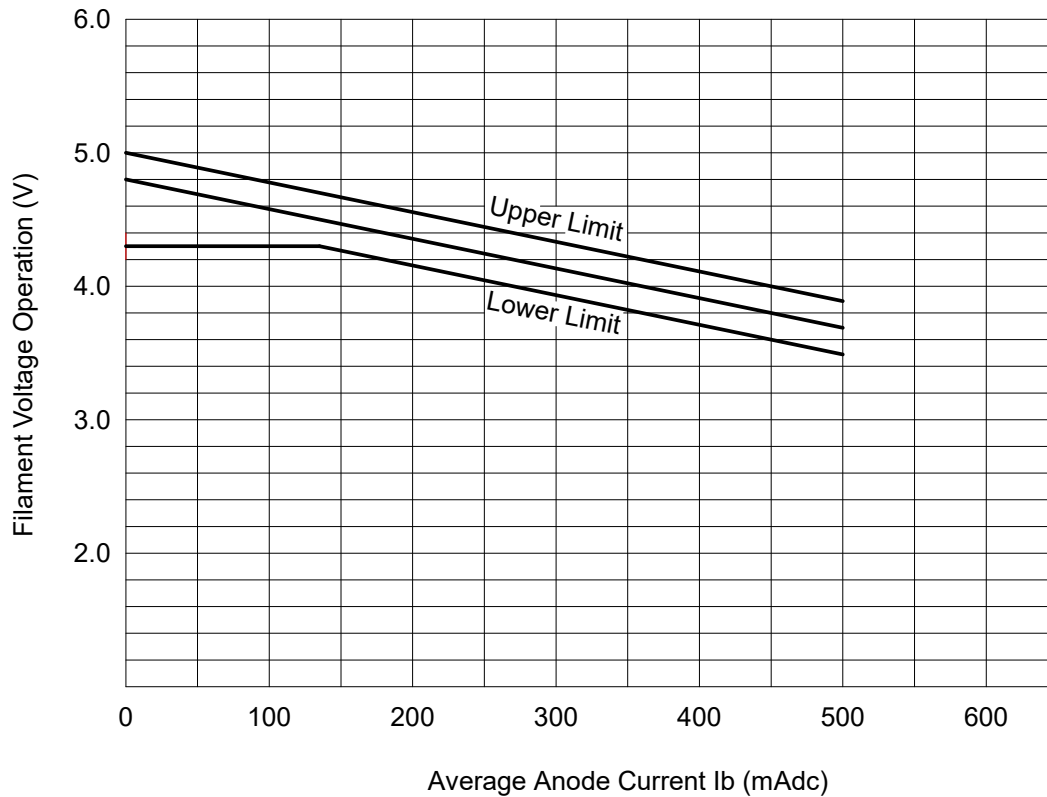
## Characteristic Parameters:

### ELECTRICAL

Operating frequency:	2455 MHz
Power output:	1.45 kW (into a matched load)
Anode voltage:	4.5 kV
Average Anode current:	450 mA
Filament voltage (standby):	4.6 Vac
Filament voltage (operation):	See filament voltage reduction schedule Figure 1
Load VSWR	<1.1

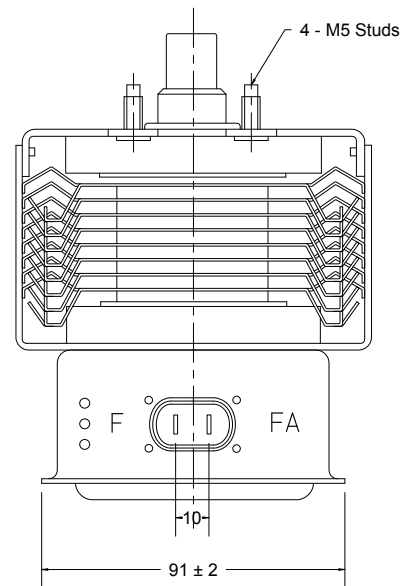
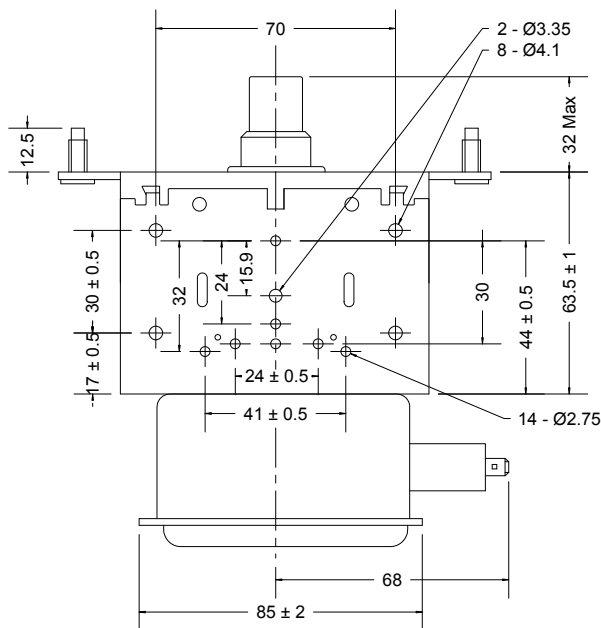
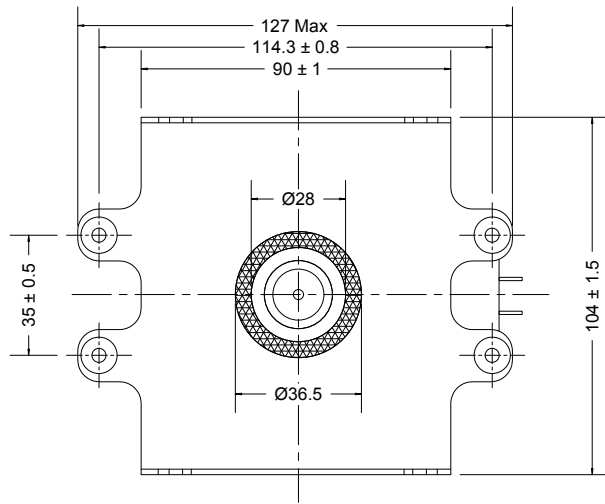
### MECHANICAL

RF launch type:	Into Rectangular waveguide or into oven cavity
Net Weight:	3.1 lbs. (1.4 Kg)

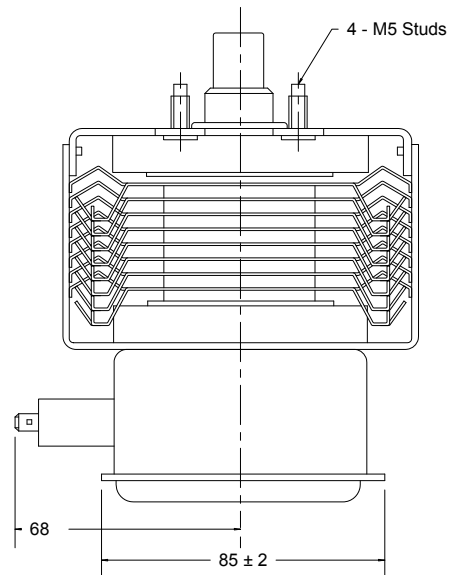
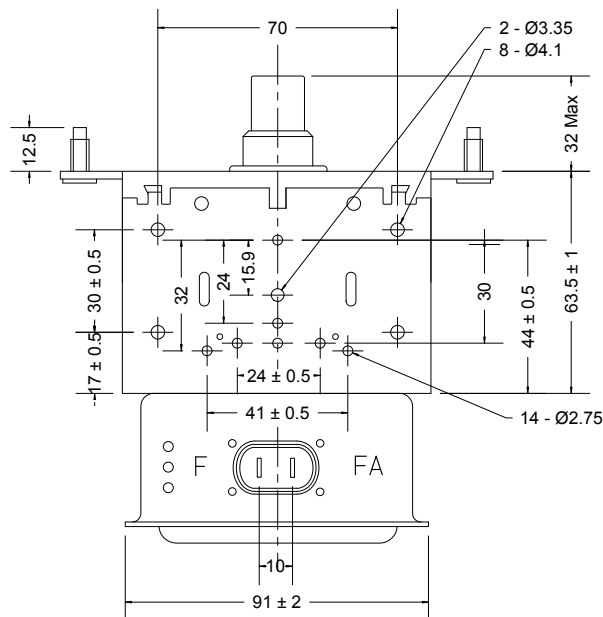
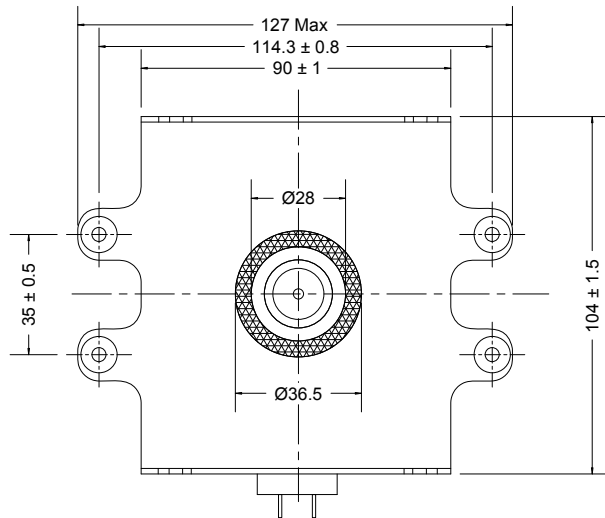


**Fig. 1 Reduction Chart of Filament Voltage**

*Note: Specifications subject to change without notice.*

**2M121A-53 Outline Drawing:**


Note: Unless otherwise noted, dimensions are nominal values in mm. Specifications subject to change without notice.

**2M121A-57 Outline Drawing:**


Note: Unless otherwise noted, dimensions are nominal values in mm. Specifications subject to change without notice.