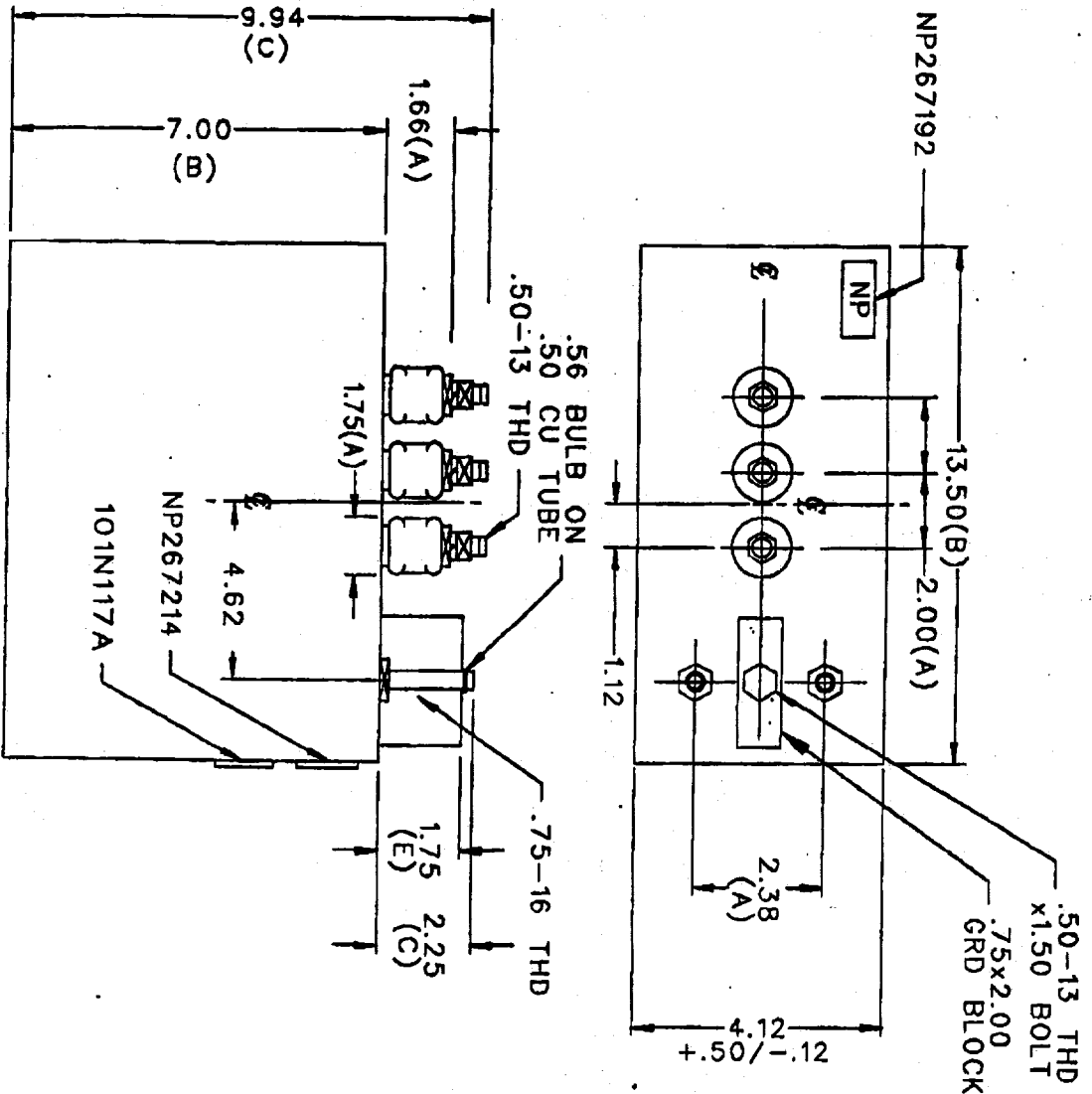


19L0625W

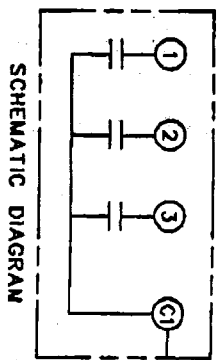
MAX. TERMINAL
TIGHTENING TORQUE
15 FT-LBS
7192



REV	DATE	SH	TRV
1	12/18/90		

TOL +/-	TERM	UF	KVAR
A .06	1	509	37.5
B .12	2	10.18	75.0
C .18	3	25.46	187.5
D .50			
E .04			

REV	DATE	SH	TRV
1	12/18/90		



NO INTERNAL DISCH RESISTORS
CAT. 19L 625RHT/SN
300KVAR 625V 3000HZ 1PH
5.09+10.18+25.46 UF/TAP
0.78 GALS. COMBUSTIBLE LIQUID
CAUTION! BEFORE INSTALLING
OR OPERATING READ GEH-2733
NP267214

ISSUED
DRAWN 02/01/85
LRO 02/11/85
CAPACITOR & POWER PROTECTION OPERATION
LOCATION: FORT EDWARD, N.Y., U.S.A.

SIZE A
SCALE WC10
EPC 1.0

OUTLINE
19L0625RHT

DISTR TO 202 10ES