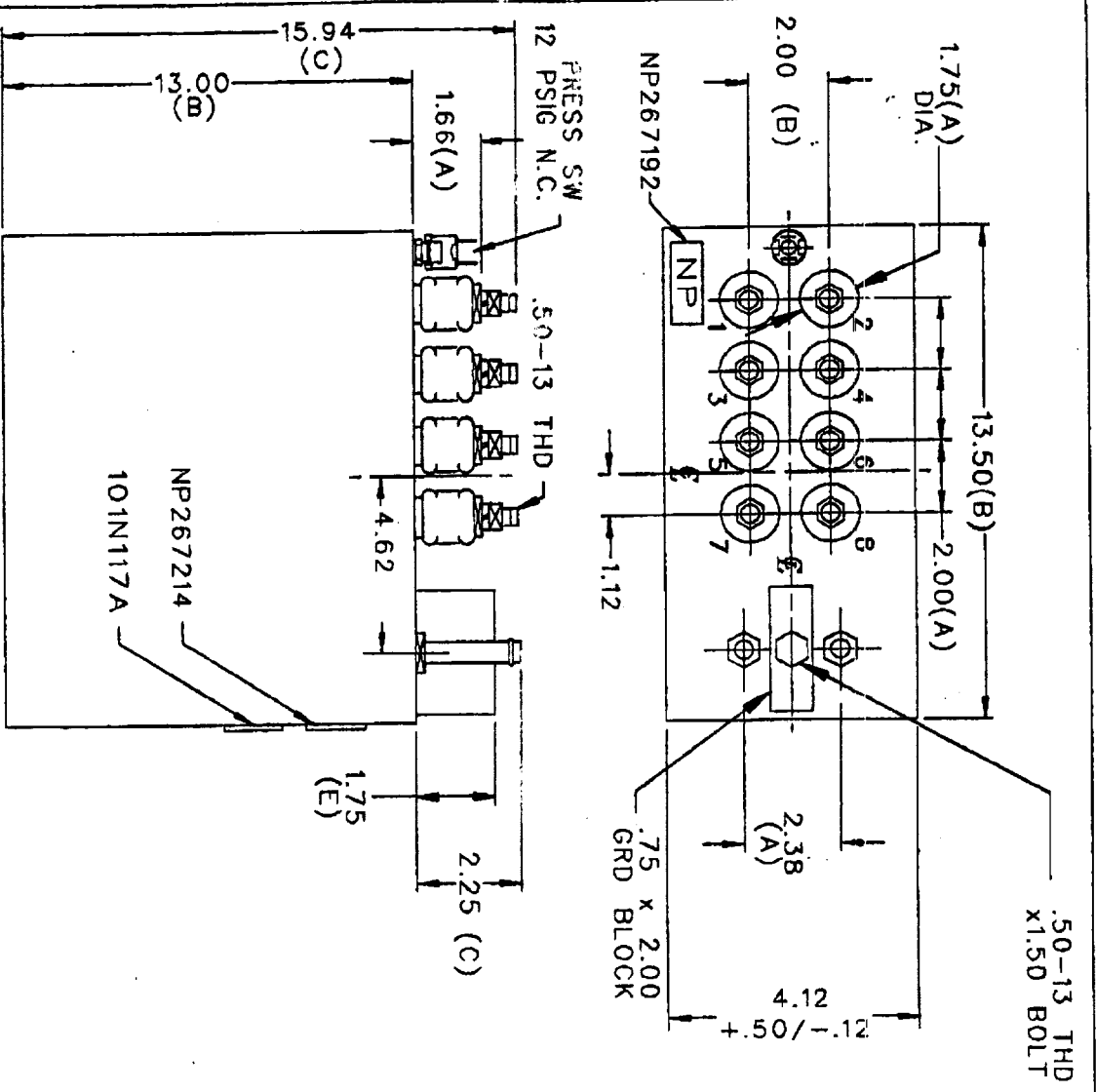


19L0575W

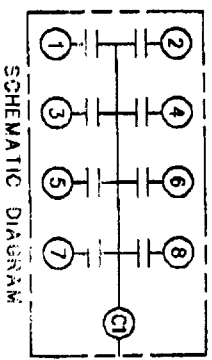


MAX. TERMINAL
TIGHTENING TORQUE:
15 FT.-LBS

GE
CAPACITOR & POWER PROTECTION OPERATION
LOCATION: FORT EDWARD, N.Y., U.S.A.
DRAWN 09/27/85 LRD 02/27/89
ISSUED

TOL +/-
A .06
B .12
C .18
D .50
E .04

TERM	UF	KVAR
1	3.18	31.25
2	3.18	31.25
3	3.18	31.25
4	3.18	31.25
5	12.73	125
6	12.73	125
7	19.1	187.5
8	19.1	187.5



NO INTERNAL DISCH RESISTORS
CAT. 19L 575RHZ *with 25N*
750KVAR 1250V 1000HZ 1PH
4x3.18+2x12.73+2x19.1 UF/TAP
16 GALS. COMBUSTIBLE LIQUID
CAUTION! BEFORE INSTALLING
OR OPERATING READ GEH-2733
NP267214

SIZE	DWG NO	SH	REV
A	19L0575RHZ		
REV 2	BTR	CHG NP	DATE 06/27/91

W42

OUTLINE *W42*
19L0575RHZ

DISTR TO 202 10ES