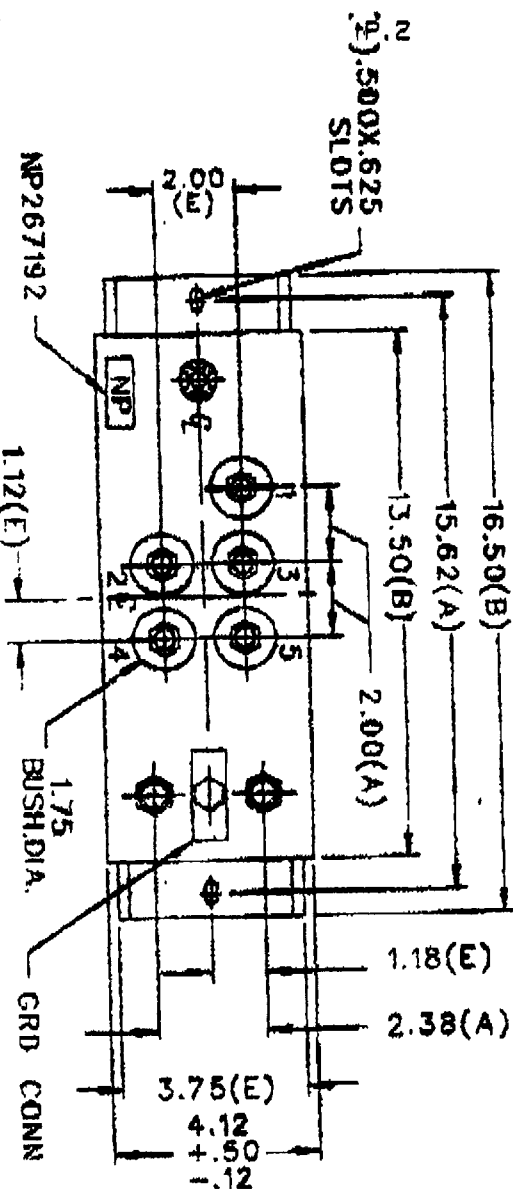


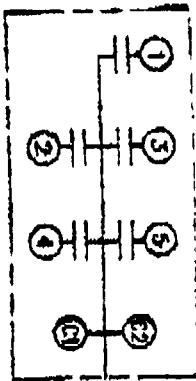
19L647RH4

DEC 14 '95 02:03PM GE POWER INDUSTRIAL

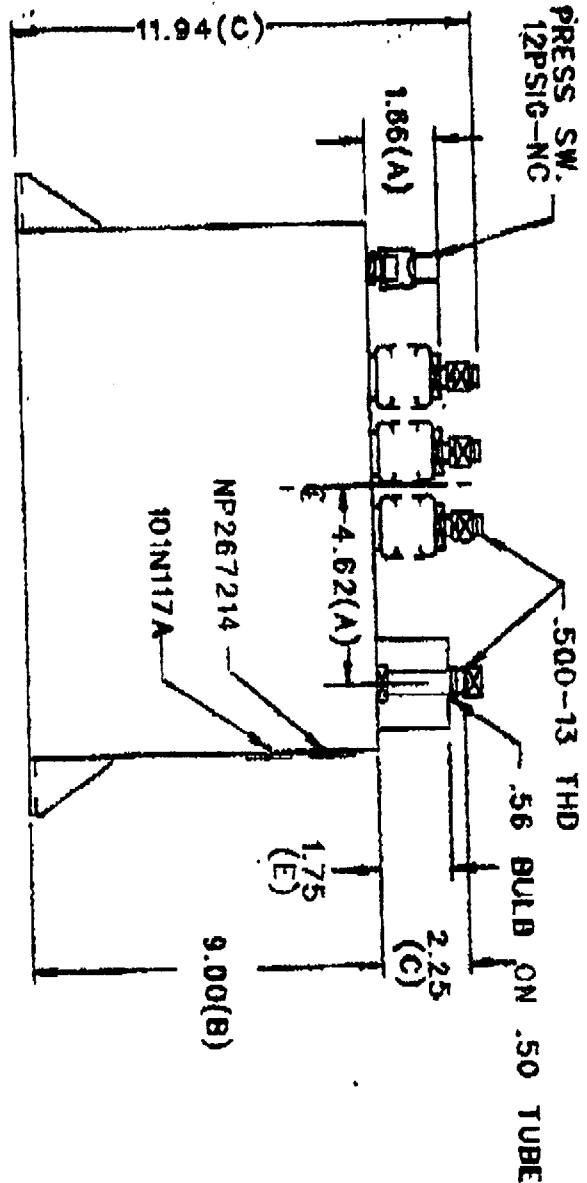


TOL +/-	TERM	UF	KVAR
A .06	1	5.43	40
B .12	2	10.86	80
C .18	3	21.73	160
D .50	4	21.73	160
E .04	5	21.73	160

TERM	UF	KVAR
1	5.43	40
2	10.86	80
3	21.73	160
4	21.73	160
5	21.73	160



SCHEMATIC DIAGRAM - 515



NO INTERNAL DISCH RESISTORS
 CAT. 19L647RH4 SN
 600 KVAR 625 V 3000 Hz 1 Ph
 5.4+10.9+(3X 21.7) UF/TAP
 1.0 GAL. COMBUSTIBLE LIQUID
 CAUTION! BEFORE INSTALLING
 OR OPERATING READ GEH-2733
 NP267214

REV	DATE	BY	DESCRIPTION	APPROVED
1	19L647RH4	25	RETRACTED, CHE NPS-11 REV SCHEM (SR90-11)	LAWRENCE
2				

MAX. TERMINAL
TIGHTENING TORQUE
15 FT-LBS
NP267192

GENERAL ELECTRIC
 CAPACITOR PRODUCTS DEPT
 LITTLE ROCK FALLS AR
 DRAWN MCGINN JUNE 27, 1984
 ISSUED JULY 12, 1984

SIZE FCIM NO
A
 SCALE
 15R84-94
 SHEET 2
OUTLINE
19L647RH4

ATTN: RAND