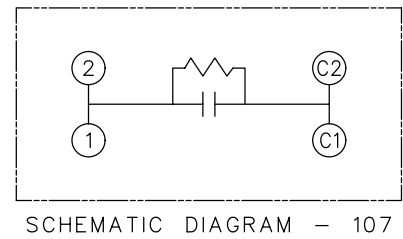
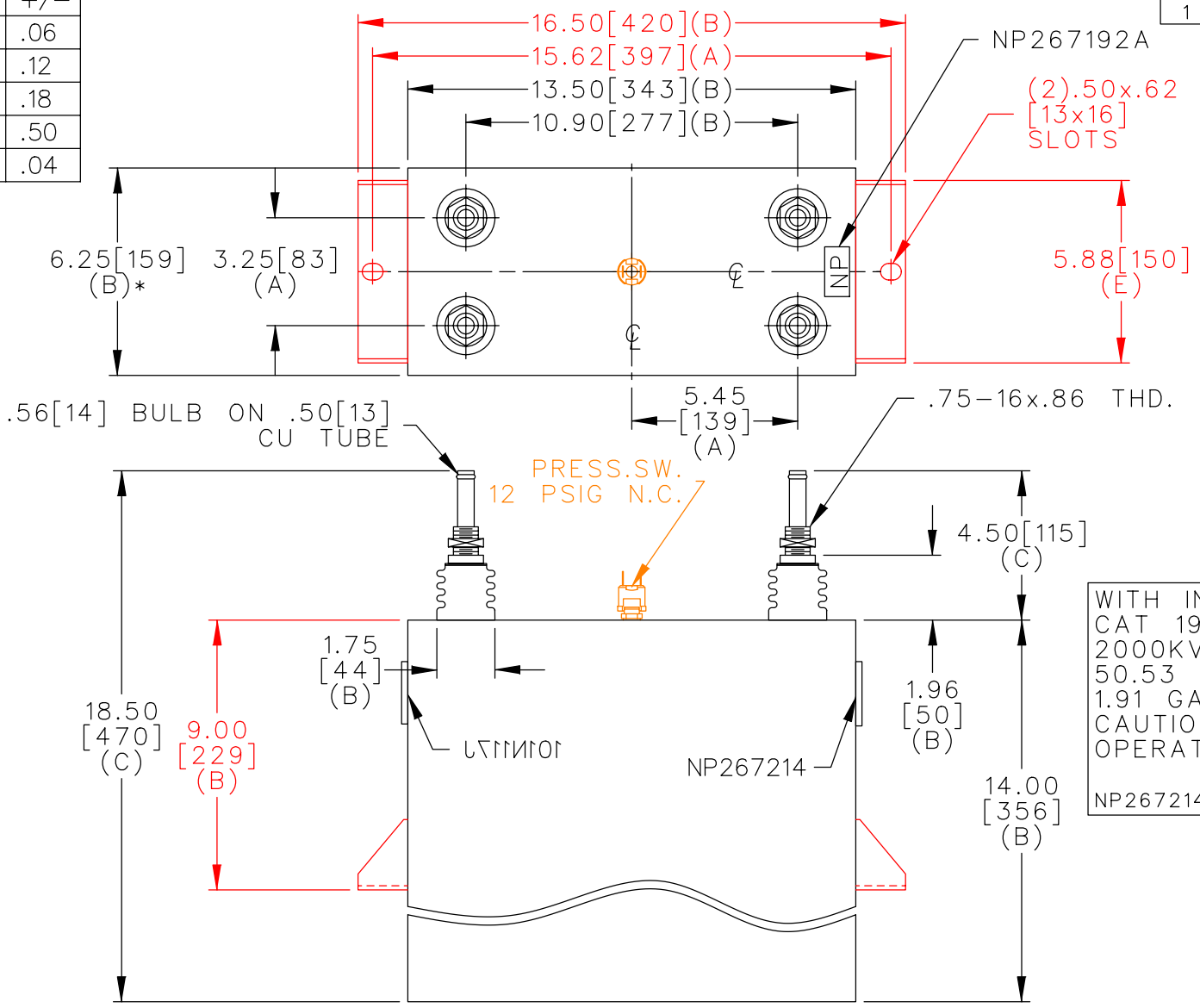


TOL	+/-
A	.06
B	.12
C	.18
D	.50
E	.04



WITH INTERNAL DISCH RESISTORS  
 CAT 19L0738WH4 SN  
 2000KVAR 3000V 700HZ 1PH  
 50.53 UF/TAP  
 1.91 GAL COMBUSTIBLE LIQUID  
 CAUTION! BEFORE INSTALLING OR  
 OPERATING READ GEH-2733  
 NP267214

\* UP TO +.50 [13]  
 CASE BULGE

MAX. TERMINAL  
 TIGHTENING TORQUE  
 15 FT-LBS

NP267192A

	CAPACITOR & POWER PROTECTION FORT EDWARD, N.Y., U.S.A.		SIZE <b>A</b>	UNIT WEIGHT 59 / 27 LB/KG	<b>OUTLINE</b> <b>19L0738WH4</b>	SHEET 2 CONT. 3
	DRAWN 09/18/96	LRD 09/18/96	SCALE WC14	version		
ISSUED						DISTR TO