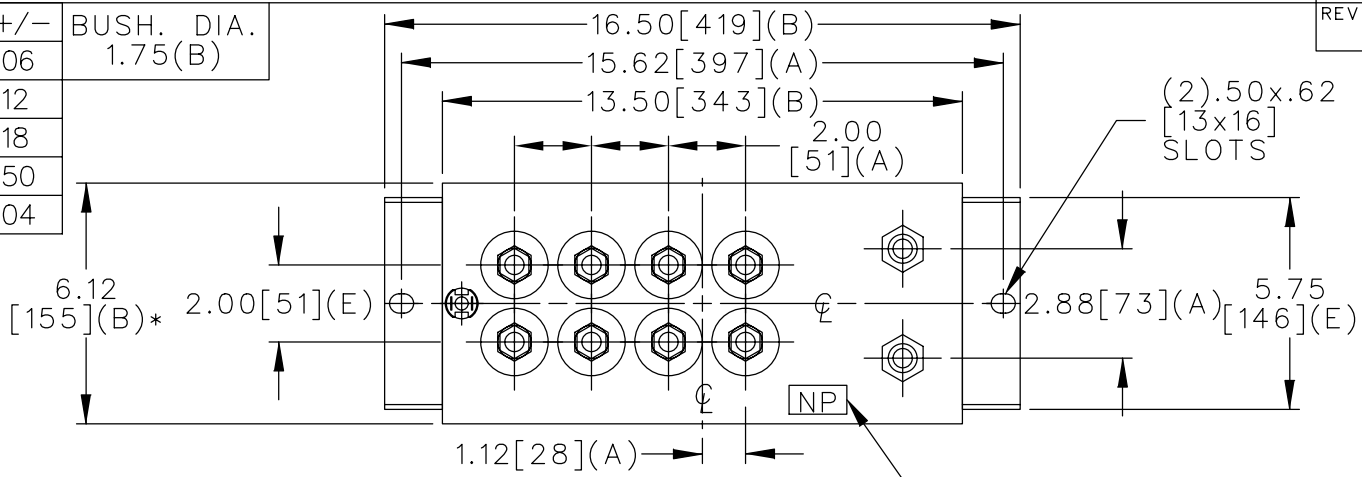
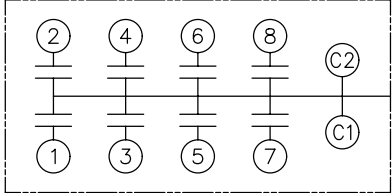


TOL	+/-	BUSH. DIA.
A	.06	1.75(B)
B	.12	
C	.18	
D	.50	
E	.04	



TERM	uF	kVAR
1	8.5	83.44
2	17.0	166.9
3	34.0	333.8
4	34.0	333.8
5	34.0	333.8
6	34.0	333.8
7	34.0	333.8
8	34.0	333.8

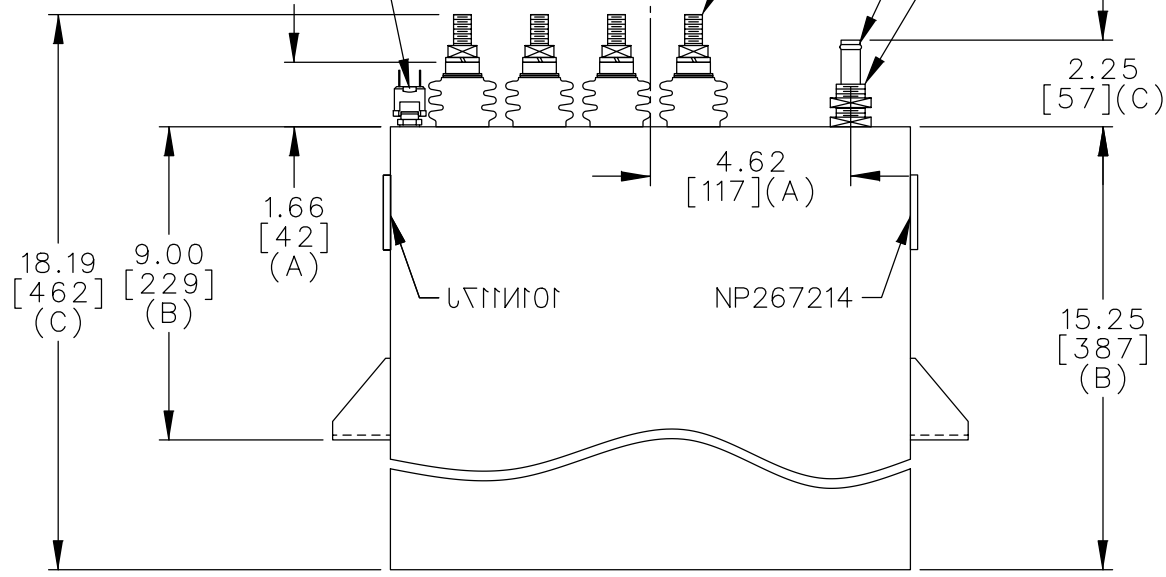


SCHEMATIC DIAGRAM - 801

PRESS.SW.
12 PSIG N.C.

.500-13 THD.

.56 [14] BULB ON
.50 [13] CU TUBE
.75-16 THD.



NO INTERNAL DISCH RESISTORS
CAT. 19L0680WH4 SN
2253KVAR 1250V 1000HZ 1PH
8.5+17+6x34 UF/TAP
2.2 GALS. COMBUSTIBLE LIQUID
CAUTION! BEFORE INSTALLING
OR OPERATING READ GEH-2733
NP267214

* UP TO +.50 [13]
CASE BULGE

MAX. TERMINAL
TIGHTENING TORQUE
15 FT-LBS

NP267192A

	CAPACITOR & POWER PROTECTION FORT EDWARD, N.Y., U.S.A.		SIZE A	OUTLINE 19L0680WH4	SHEET 2 CONT. ON -	
	DRAWN J.Cozzens MAR. 17,1997	ISSUED 3-19-97				SCALE
	DISTR TO					