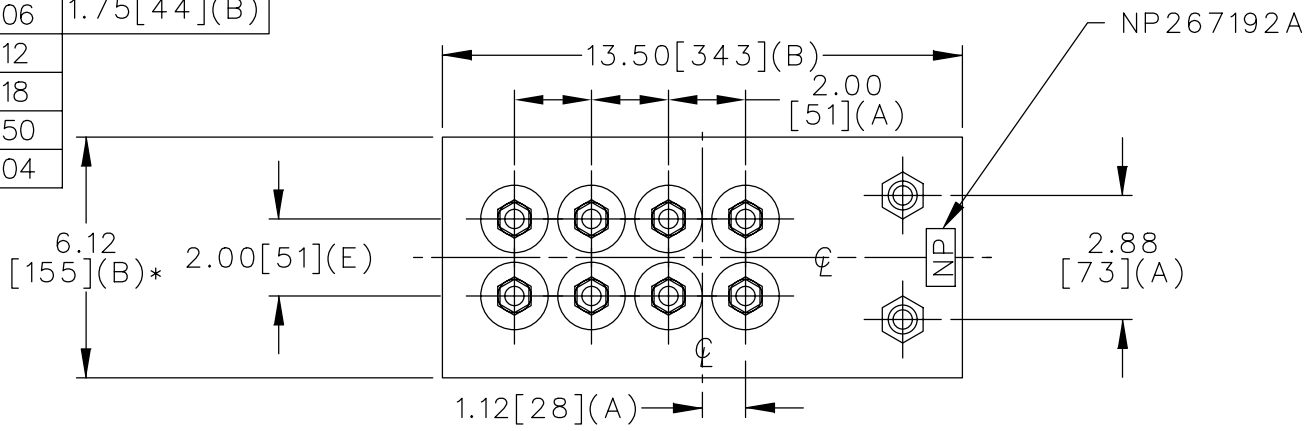
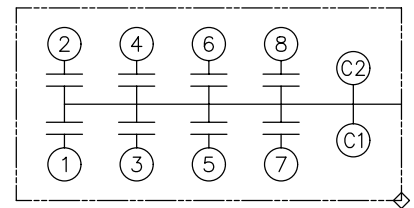


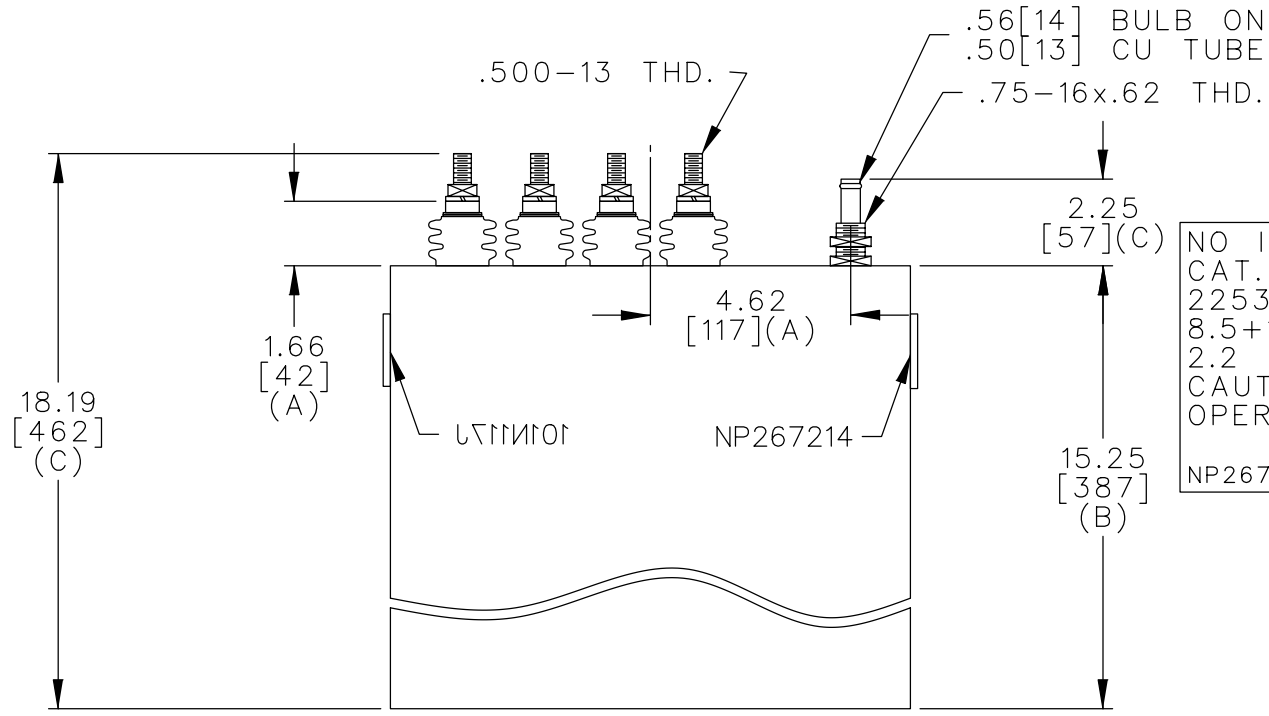
TOL	+/-	BUSH. DIA.
A	.06	1.75[44](B)
B	.12	
C	.18	
D	.50	
E	.04	



TERM	uF	kVAR
1	8.5	83.44
2	17	166.9
3	34	333.8
4	34	333.8
5	34	333.8
6	34	333.8
7	34	333.8
8	34	333.8



SCHEMATIC DIAGRAM - 801



NO INTERNAL DISCH RESISTORS  
 CAT. 19L0680WH1 SN  
 2253KVAR 1250V 1000HZ 1PH  
 8.5+17+6x34 UF/TAP  
 2.2 GALS. COMBUSTIBLE LIQUID  
 CAUTION! BEFORE INSTALLING OR  
 OPERATING READ GEH-2733  
 NP267214

\* UP TO +.50[13]  
 CASE BULGE

MAX. TERMINAL  
 TIGHTENING TORQUE  
 15 FT-LBS

NP267192A

	CAPACITOR & POWER PROTECTION FORT EDWARD, N.Y., U.S.A.		SIZE <b>A</b>	<b>OUTLINE</b> <b>19L0680WH1</b>	SHEET 2 CONT. ON -
	DRAWN TMO	MAR 13, 1997	SCALE		
ISSUED					

DISTR TO