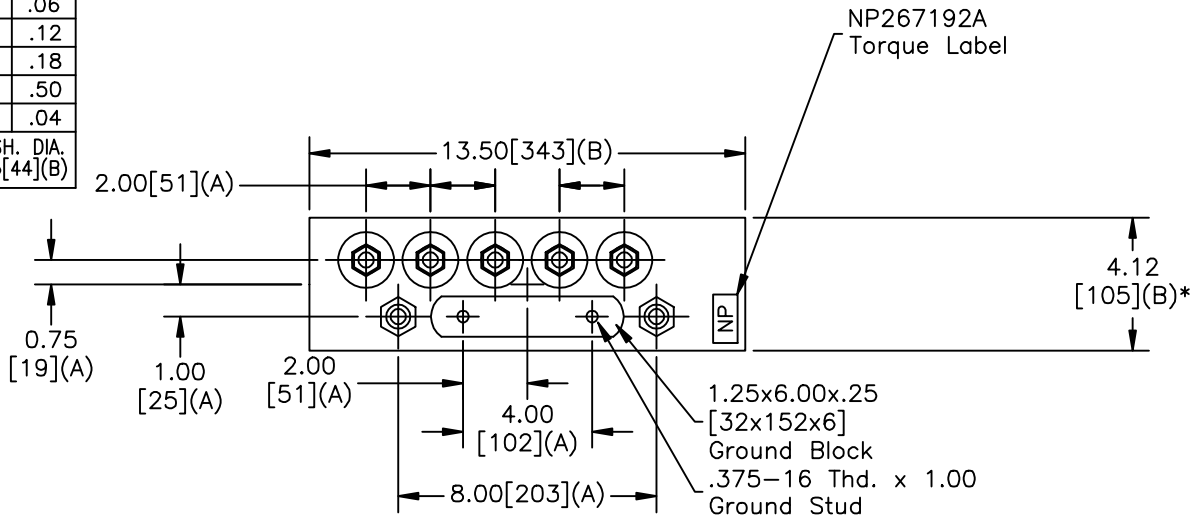
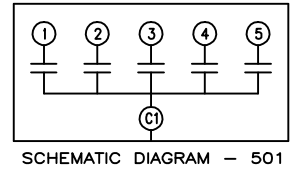
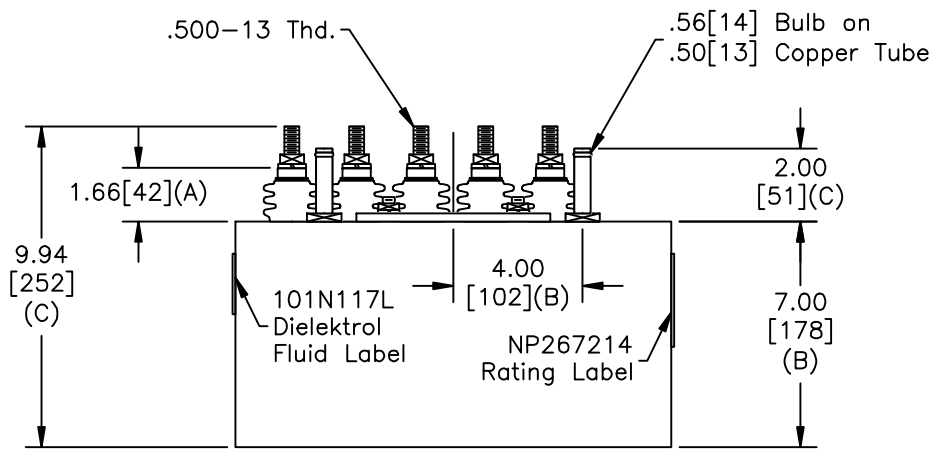


SIZE A	DWG NO 19L0542WH1	SHT 2	REV 3
REV 3	DESCRIPTION CASE WAS 9.00	DATE 6/16/2008	APPROVED BTR

TOL	+/-
A	.06
B	.12
C	.18
D	.50
E	.04
BUSH. DIA.	1.75[44](B)



TERM	uF	kVAR
1	6.22	240
2	6.22	240
3	6.22	240
4	6.22	240
5	6.22	240



**GE CAPACITOR**  
NO INTERNAL DISCHARGE RESISTORS

CAT. 19L0542WH1 SN  
1200KVAR 800V 9600HZ 1PH  
5x6.22UF/TAP  
0.86 GAL. COMBUSTIBLE LIQUID  
CAUTION! BEFORE INSTALLING OR  
OPERATING READ GEH-2733

MADE IN USA NP267214

\* UP TO +.50[13] CASE BULGE

MAX. TERMINAL TIGHTENING TORQUE 15 FT-LBS.

<b>GE ENERGY</b> FORT EDWARD, N.Y., U.S.A.	SIZE A	Est Weight 21 lbs.	<h1>OUTLINE</h1> <h2>19L0542WH1</h2>	
	DRAWN <b>McGINN</b> DATE <b>1/7/1997</b> ISSUED                      DATE <b>1/8/1997</b>			

DISTR. TO