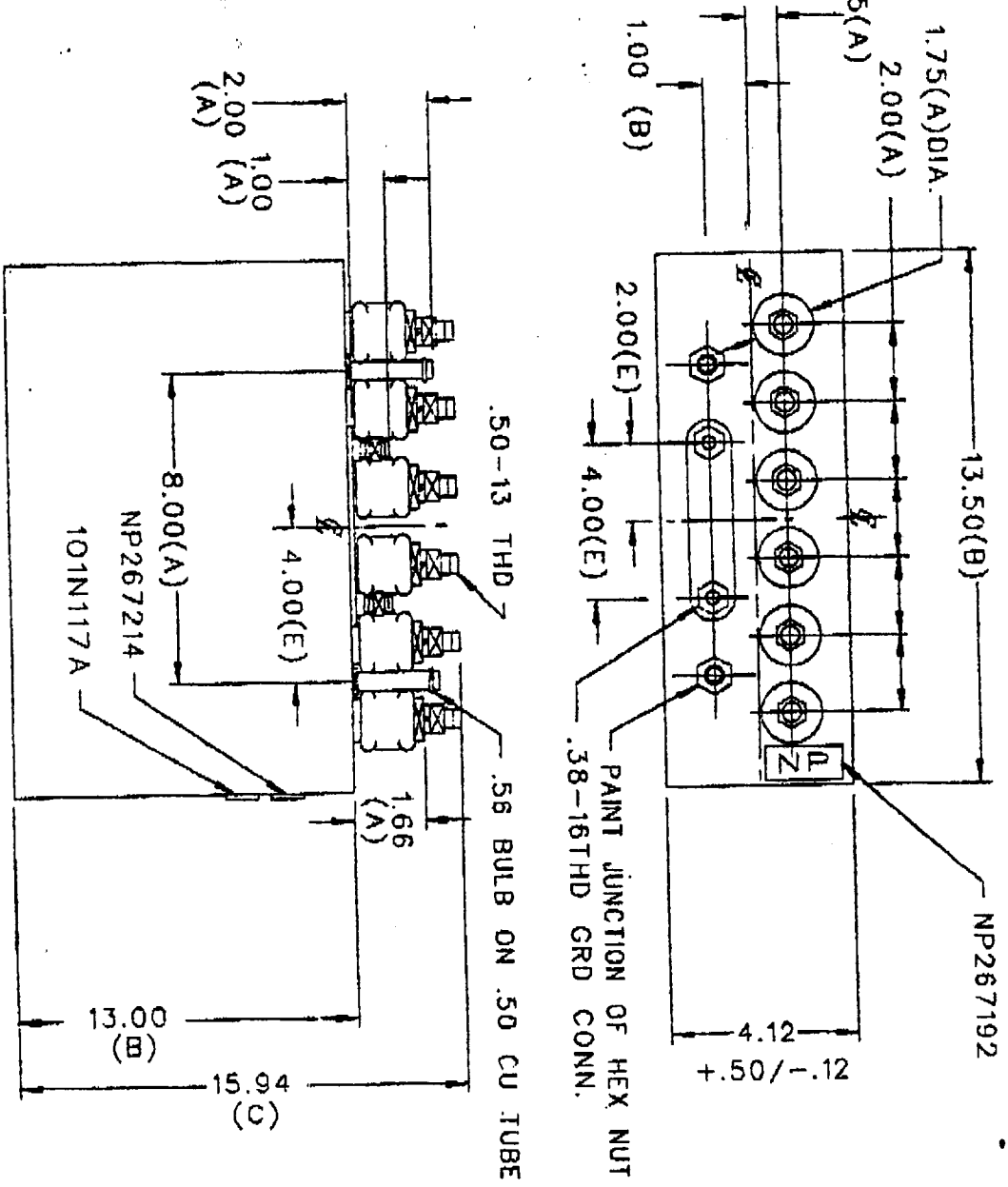
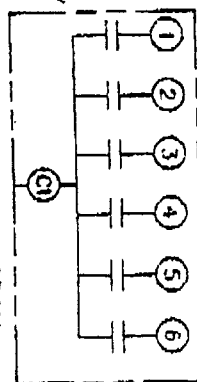


19L0540W



TOL	+/-
A	.06
B	.12
C	.18
D	.50
E	.04

TERM	UF	KVAR
1	12.85	150
2	12.85	150
3	12.85	150
4	12.85	150
5	12.85	150
6	12.85	150



NO INTERNAL DISCH RESISTORS
 CAT. 19L 540RH1 SN
 900KVAR 440V 9600HZ IPH
 6x12.85 UF/TAP
 1.3 GALS. COMBUSTIBLE LIQUID
 CAUTION: BEFORE INSTALLING
 OR OPERATING READ GEH-2733
 NP267214

MAX. TERMINAL
 TIGHTENING TORQUE
 15 FT.-LBS
 NP267192

CAPACITOR & POWER PROTECTION OPERATION
 LOCATION: FORT EDWARD, N.Y., U.S.A.
 DRAWN 11/04/83 LRD 07/12/84
 ISSUED

SIZE
A

SCALE WC9
 VERSION

OUTLINE
 19L0540WH1

DISTR TO

REV	DATE	CHG	NPS
2	02/15/90		

SIZE 19L0540WH1
 DATE 02/15/90
 CHG NPS