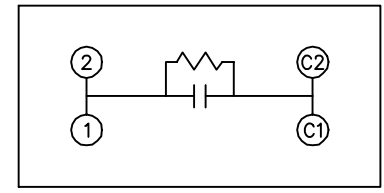
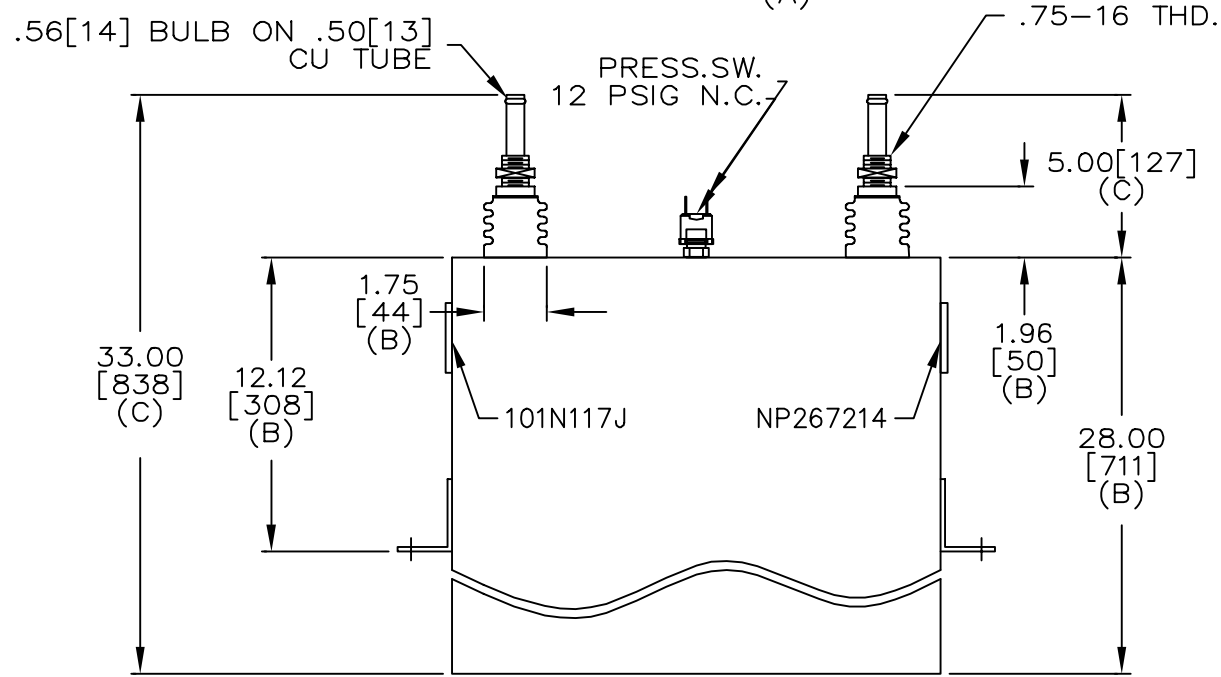
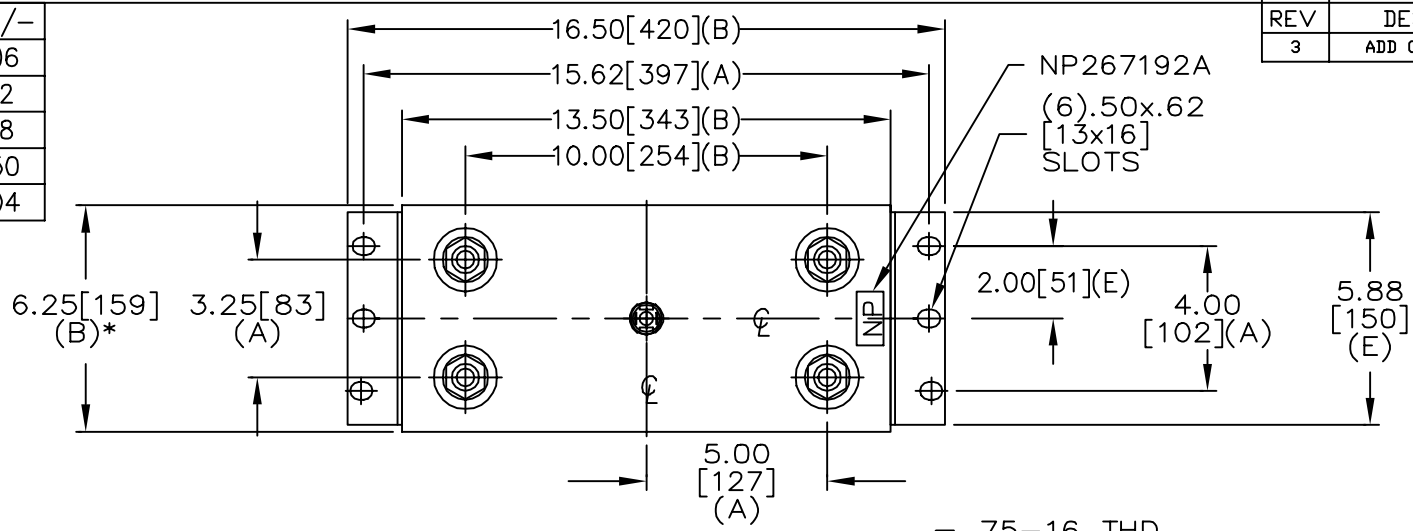


SIZE A	DWG NO 19L0526WH4	SHT 2	REV 3
REV 3	DESCRIPTION ADD CONT ON SH 3	DATE	APPROVED EJM

TOL	+/-
A	.06
B	.12
C	.18
D	.50
E	.04



SCHEMATIC DIAGRAM - 107

WITH INTERNAL DISCH RESISTORS  
 CAT 19L0526WH4 SN  
 6921KVAR 3000V 1200HZ 1PH  
 102.0 UF/TAP  
 3.4 GAL COMBUSTIBLE LIQUID  
 CAUTION! BEFORE INSTALLING OR  
 OPERATING READ GEH-2733  
 NP267214

\* UP TO +.50 [13]  
 CASE BULGE

MAX. TERMINAL  
 TIGHTENING TORQUE  
 15 FT-LBS

NP267192A

<b>INDUSTRIAL SYSTEMS</b> FORT EDWARD, N.Y., U.S.A.	SIZE A	OUTLINE 19L0526WH4
	DRAWN E. McGinn DATE 2-7-97	
ISSUED DATE 2-12-97	SCALE	SHEET 2 CONT ON 3

DISTR. TO