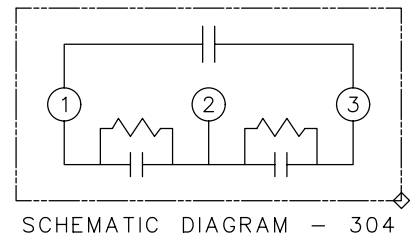
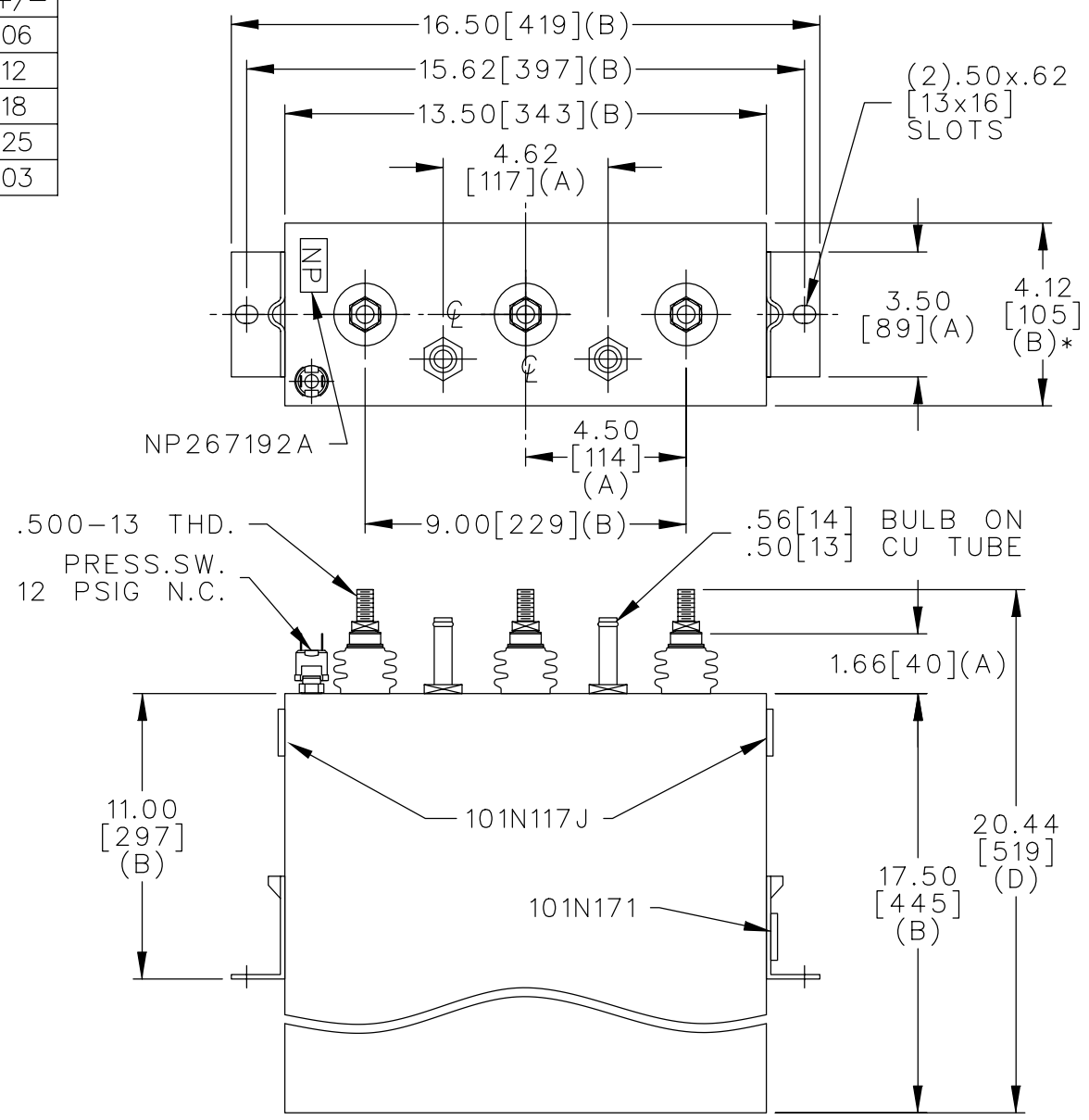


TOL	+/-
A	.06
B	.12
C	.18
D	.25
E	.03

SIZE <b>A</b>	DWG NO. 19L0487WH4	SH 2	REV
REV 1	McGINN UPDATE CAT NO		



1200V 3PH  
 120KVAR 60HZ KVBIL  
 CAT. 19L0487WH4 NO.  
 1.62 GAL. MFG DATE  
 GEH-2733

101N171

\* UP TO +.50 [13]  
 CASE BULGE

MAX. TERMINAL  
 TIGHTENING TORQUE  
 15 FT-LBS

NP267192A

	CAPACITOR & POWER PROTECTION FORT EDWARD, N.Y., U.S.A.		SIZE <b>A</b>	FSCM NO	<b>OUTLINE</b> <b>19L0487WH4</b>	DISTR TO
	DRAWN E.McGINN	NOV. 21, 1996	SCALE	SHEET 2 CONT 3		
ISSUED	12-4-96					