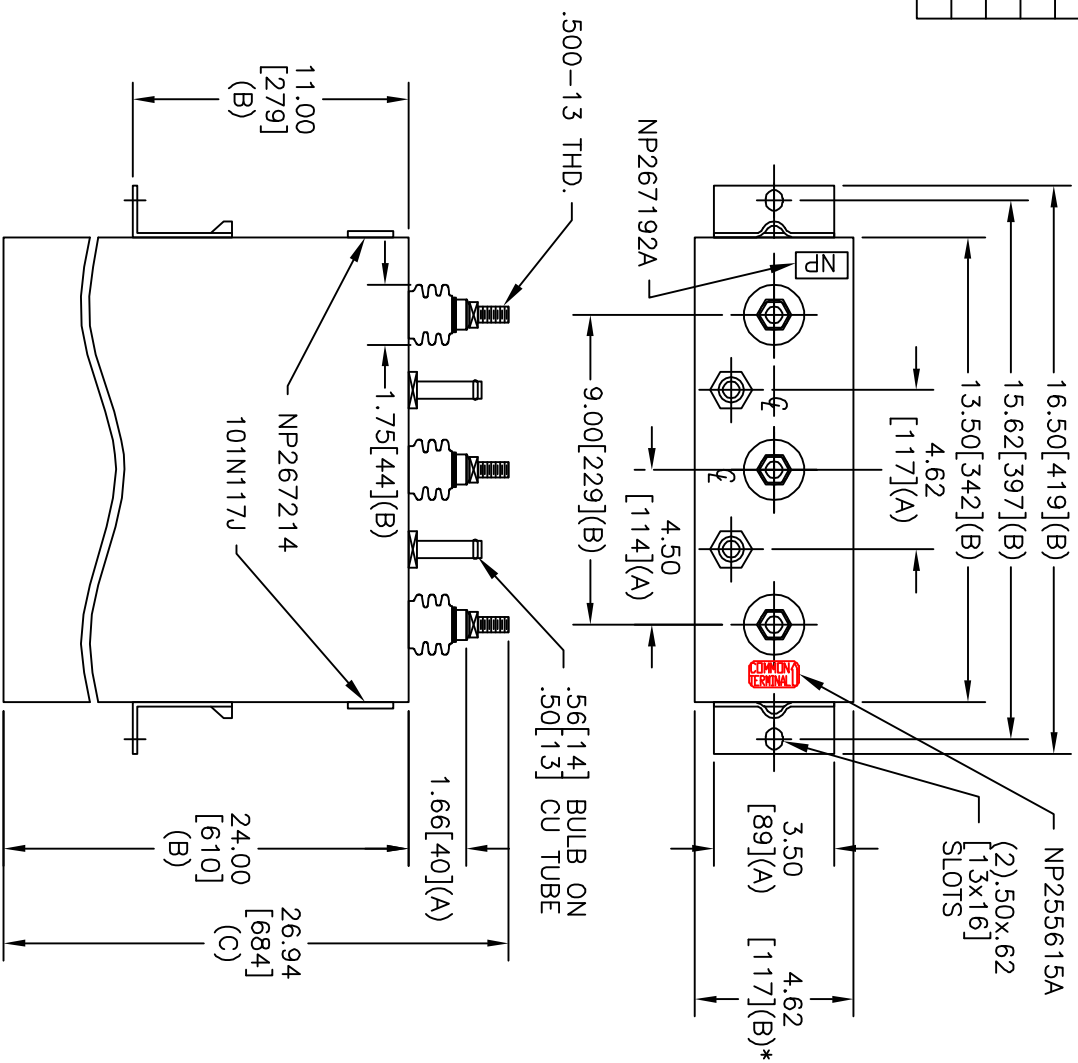
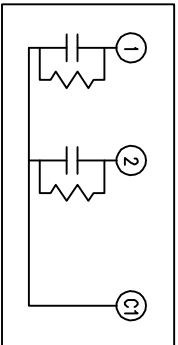


TOL	+/-
A	.06
B	.12
C	.18
D	.25
E	.03



TERM	UF	KVAR
1	236	50
2	236	50



SCHEMATIC DIAGRAM - 212

WITH INTERNAL DISCH RESISTORS
 CAT. 19L0482WH3 SN
 100KVAR 750V 60HZ 1PH
 2x236 UF/TAP
 2.5 GAL. COMBUSTIBLE LIQUID
 CAUTION! BEFORE INSTALLING OR
 OPERATING READ GEH-2733
 NP267214

SIZE	DWG NO	SHT	REV
A	19L0482WH3	2	5
REV	DESCRIPTION	DATE	APPROVED
5	REDRAW	8/22/06	BTR

* UP TO +.50 [13]
 CASE BULGE

MAX. TERMINAL
 TIGHTENING TORQUE
 15 FT-LBS

NP267192A



GE ENERGY
 FORT EDWARD, N.Y., U.S.A.

ISSUED	DATE	DATE	SCALE
DRAWN	E. McGinn	12/05/1996	A
DATE	12/11/1996		

OUTLINE
 19L0482WH3

SHEET	CONT
2	3

DISTR. TO