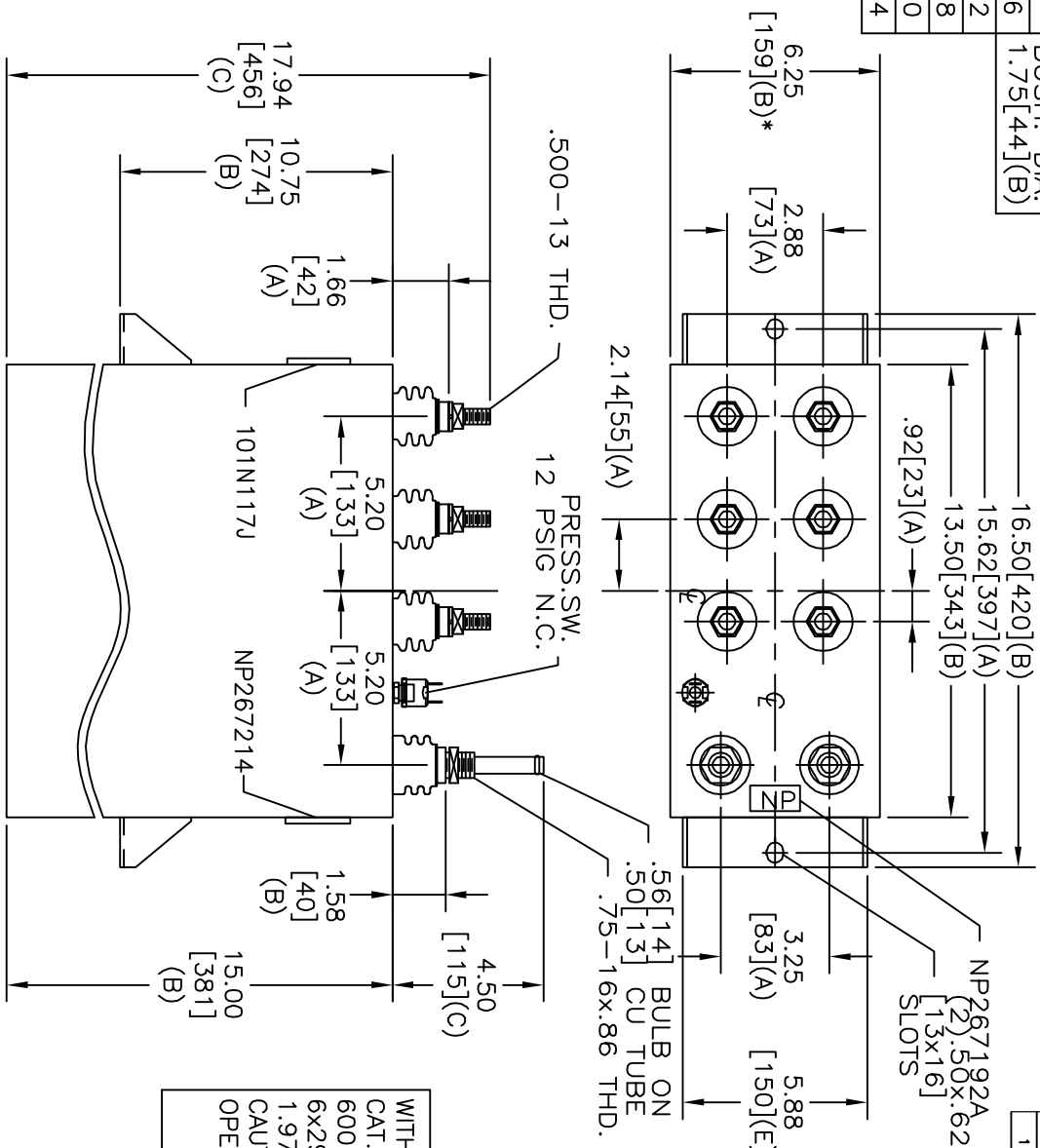
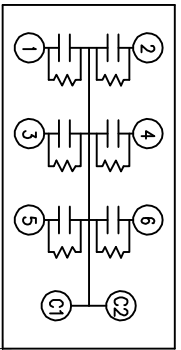


TOL	+/-	BUSH. DIA.
A	.06	1.75[.44](B)
B	.12	
C	.18	
D	.50	
E	.04	



SIZE	DWG NO	SHT	REV
A	19L0471WH4	2	1
REV	DESCRIPTION	DATE	APPROVED
1	UPDATE CAT NO	3/24/04	BTR

TERM	UF	KVAR
1	29.47	100
2	29.47	100
3	29.47	100
4	29.47	100
5	29.47	100
6	29.47	100



SCHEMATIC DIAGRAM - 617

WITH INTERNAL DISCH RESISTORS  
 CAT. 19L0471WH4 SN  
 600KVAR 1000V 540HZ 1PH  
 6x29.47 UF/TAP  
 1.97 GAL. COMBUSTIBLE LIQUID  
 CAUTION! BEFORE INSTALLING OR  
 OPERATING READ GEH-2733  
 NP267214

\* UP TO +.50[13]  
 CASE BULGE

MAX. TERMINAL  
 TIGHTENING TORQUE  
 15 FT-LBS

NP267192A

**INDUSTRIAL SYSTEMS**  
**FORT EDWARD, N.Y., U.S.A.**

DRAWN EPC  
 DATE NOV 10, 1997

ISSUED  
 DATE 11-12-97

SIZE **A**

SCALE

**OUTLINE**

19L0471WH4

SHEET 2 CONT 3