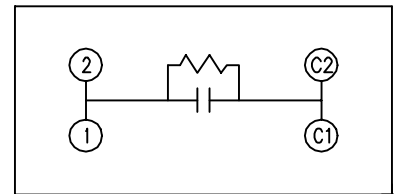
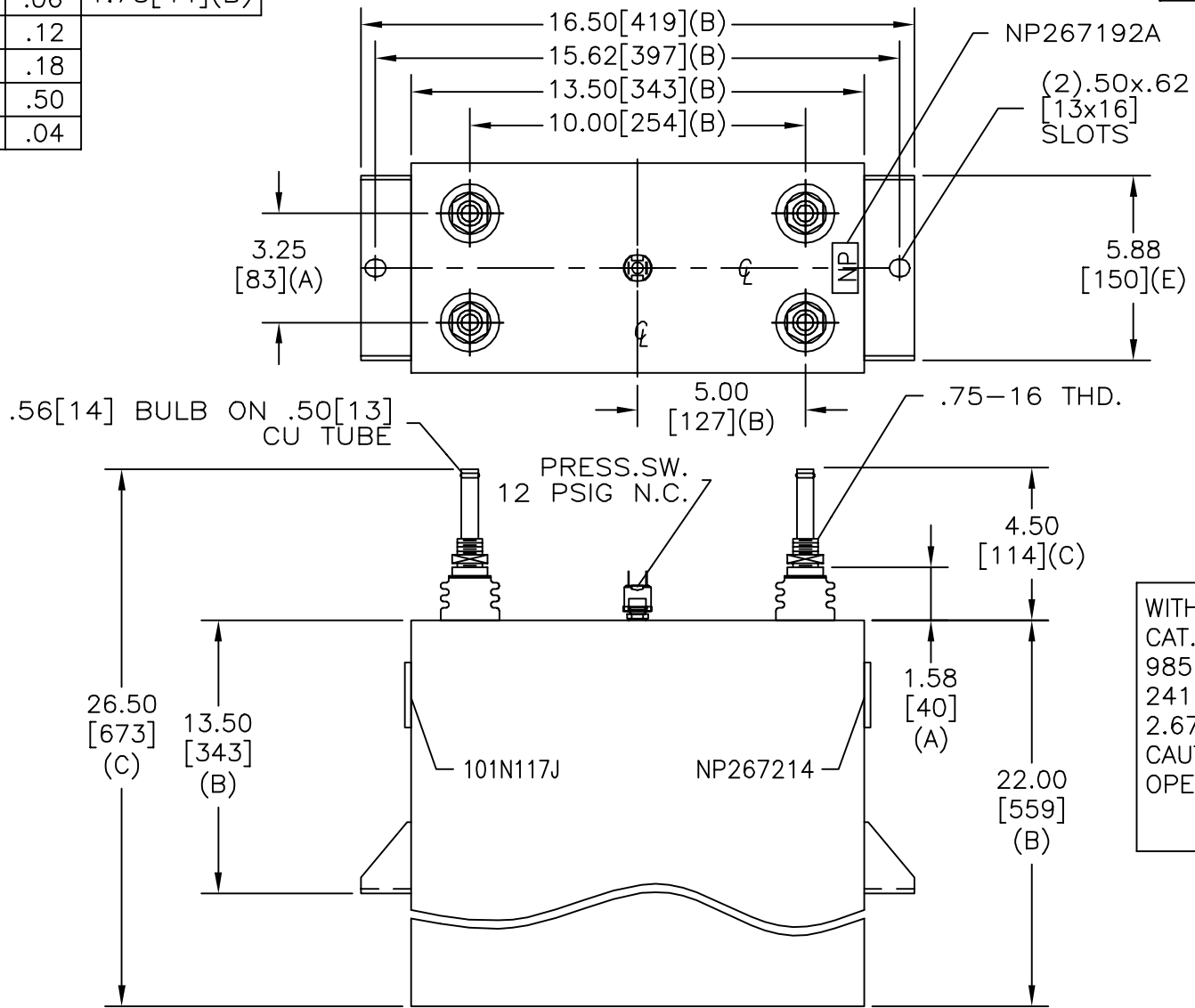


TOL	+/-	BUSH. DIA.
A	.06	1.75[44](B)
B	.12	
C	.18	
D	.50	
E	.04	

SIZE A	DWG NO 19L0457WH4	SHT 2	REV 1
REV 1	DESCRIPTION UPDATE CAT NO.	DATE 11/13/02	APPROVED BTR



SCHEMATIC DIAGRAM - 107

WITH INTERNAL DISCH RESISTORS
 CAT. 19L0457WH4 SN
 985KVAR 1800V 200HZ 1PH
 241.9 UF
 2.67 GAL. COMBUSTIBLE LIQUID
 CAUTION! BEFORE INSTALLING OR
 OPERATING READ GEH-2733

NP267214

* UP TO +.50[13]
 CASE BULGE

MAX. TERMINAL
 TIGHTENING TORQUE
 15 FT-LBS

NP267192A

INDUSTRIAL SYSTEMS FORT EDWARD, N.Y., U.S.A.		SIZE A
		SCALE
DRAWN EPC	DATE 11/07/96	SHEET 2 CONT ON 3
ISSUED	DATE 11/20/96	

OUTLINE
19L0457WH4

DISTR. TO