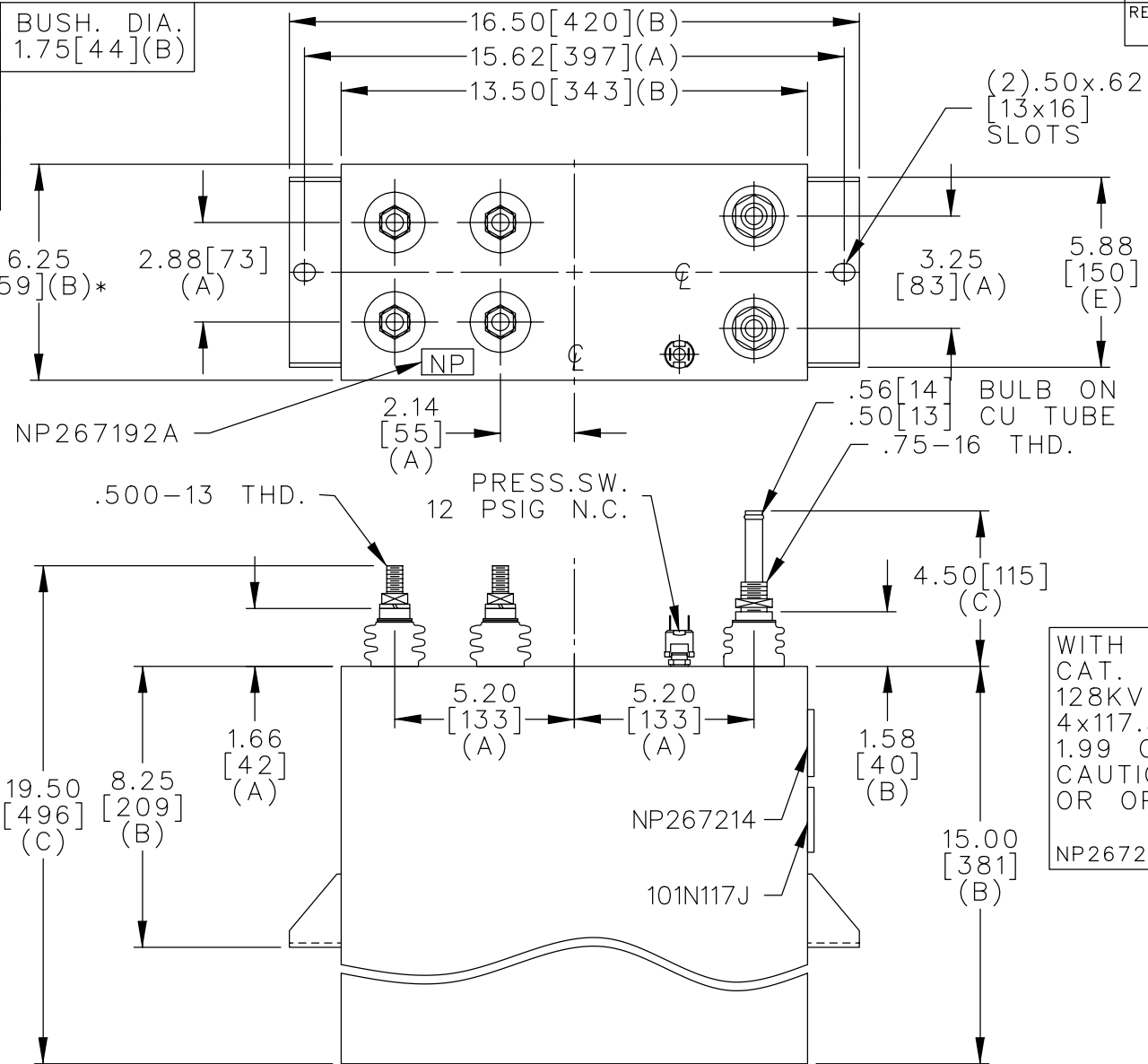
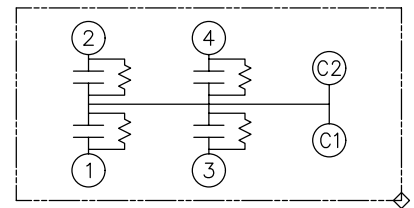


TOL	+/-
A	.06
B	.12
C	.18
D	.50
E	.04



TERM	uF	kVAR
1	117.5	32
2	117.5	32
3	117.5	32
4	117.5	32



SCHEMATIC DIAGRAM - 422

WITH INTERNAL DISCH RESISTORS
 CAT. 19L0439WH4 SN
 128KVAR 850V 60HZ 1PH
 4x117.5UF
 1.99 GAL. COMBUSTIBLE LIQUID
 CAUTION! BEFORE INSTALLING
 OR OPERATING GEH-2733
 NP267214

* UP TO +.50 [13] CASE BULGE

MAX. TERMINAL TIGHTENING TORQUE 15 FT-LBS

NP267192A

	CAPACITOR & POWER PROTECTION FORT EDWARD, N.Y., U.S.A.		SIZE A	UNIT WEIGHT 67 / 30 LB/KG	OUTLINE 19L0439WH4
	DRAWN Cozzens	AUG. 27, 1996			
ISSUED	8-28-96	SCALE	SHEET 2	CONT. ON 3	DISTR TO