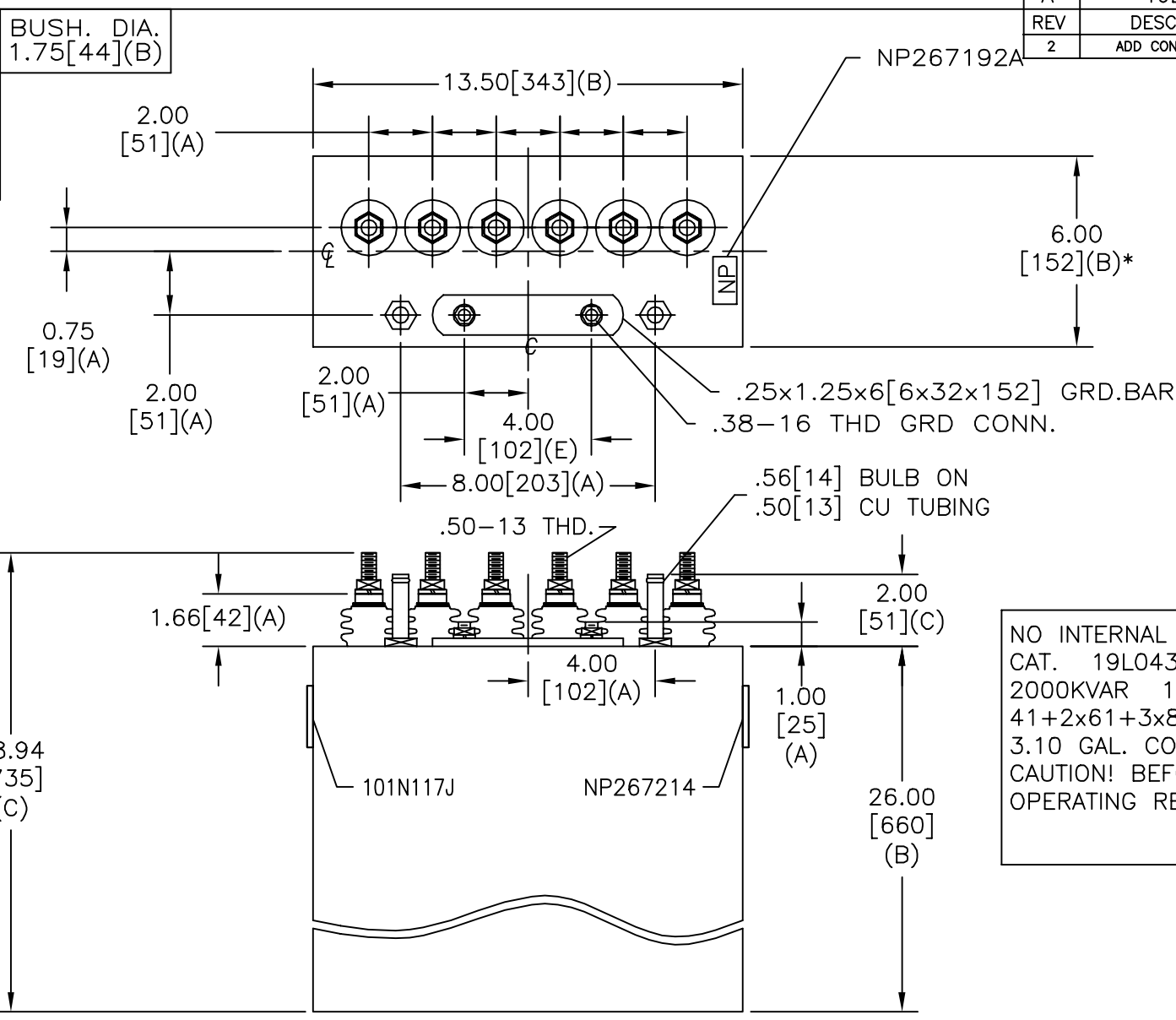
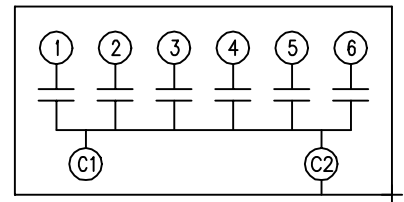


SIZE A	DWG NO 19L0432WH1	SHT 2	REV 2
REV 2	DESCRIPTION ADD CONT ON SH3	DATE 9/3/03	APPROVED BTR

TOL	+/-
A	.06
B	.12
C	.18
D	.50
E	.04



TERM	uF	kVAR
1	40.7	200
2	61.1	300
3	61.1	300
4	81.5	400
5	81.5	400
6	81.5	400



SCHEMATIC DIAGRAM - 601

NO INTERNAL DISCH RESISTORS  
 CAT. 19L0432WH1 SN  
 2000KVAR 1250V 500HZ 1PH  
 41+2x61+3x82 UF/TAP  
 3.10 GAL. COMBUSTIBLE LIQUID  
 CAUTION! BEFORE INSTALLING OR  
 OPERATING READ GEH-2733

NP267214

\* UP TO +.50 [13]  
 CASE BULGE

MAX. TERMINAL  
 TIGHTENING TORQUE  
 15 FT-LBS

NP267192A

	INDUSTRIAL SYSTEMS FORT EDWARD, N.Y., U.S.A.		SIZE A
	DRAWN E. McGinn	DATE NOV. 5, 1997	SCALE
ISSUED	DATE 11/5/97		

OUTLINE 19L0432WH1	
SHEET 2	CONT ON 3

DISTR. TO