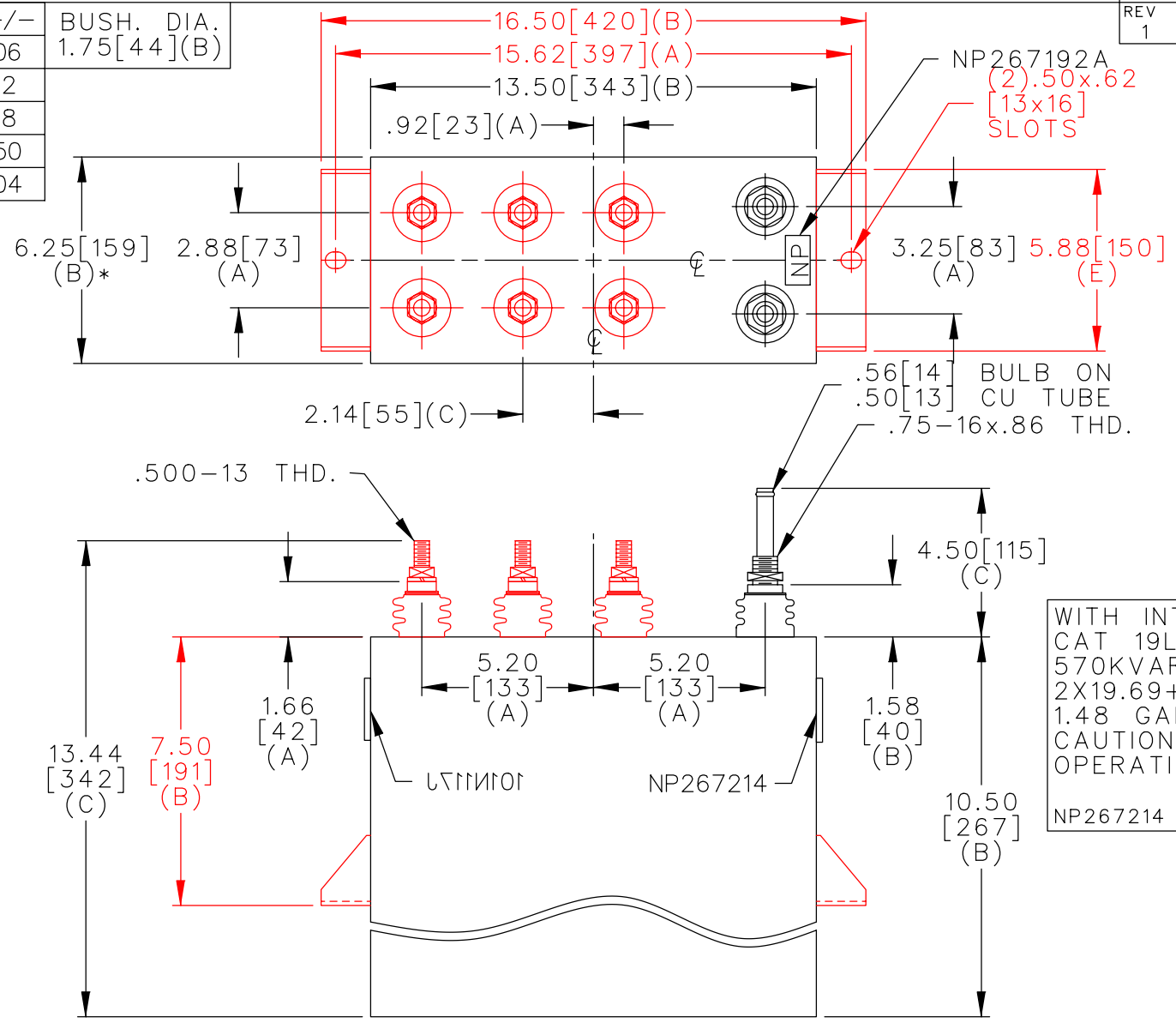
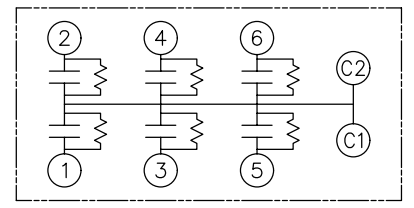


TOL	+/-	BUSH. DIA.
A	.06	1.75[44](B)
B	.12	
C	.18	
D	.50	
E	.04	



TERM	uF	kVAR
1	19.69	47.5
2	19.69	47.5
3	39.37	95
4	39.37	95
5	59.06	142.5
6	59.06	142.5



SCHEMATIC DIAGRAM - 617

WITH INTERNAL DISCH RESISTORS
 CAT 19L0417WH3 SN
 570KVAR 800V 600HZ 1PH
 2X19.69+2X39.37+2X59.06UF/TAP
 1.48 GAL COMBUSTIBLE LIQUID
 CAUTION! BEFORE INSTALLING OR
 OPERATING READ GEH-2733
 NP267214

* UP TO +.50[13]
 CASE BULGE

MAX. TERMINAL
 TIGHTENING TORQUE
 15 FT-LBS

NP267192A

	CAPACITOR & POWER PROTECTION FORT EDWARD, N.Y., U.S.A.		SIZE A	UNIT WEIGHT 47 / 21 LB/KG	OUTLINE 19L0417WH3	SHEET 2 CONT. 3
	DRAWN 11/07/96	LRD 11/07/96				
ISSUED						DISTR TO