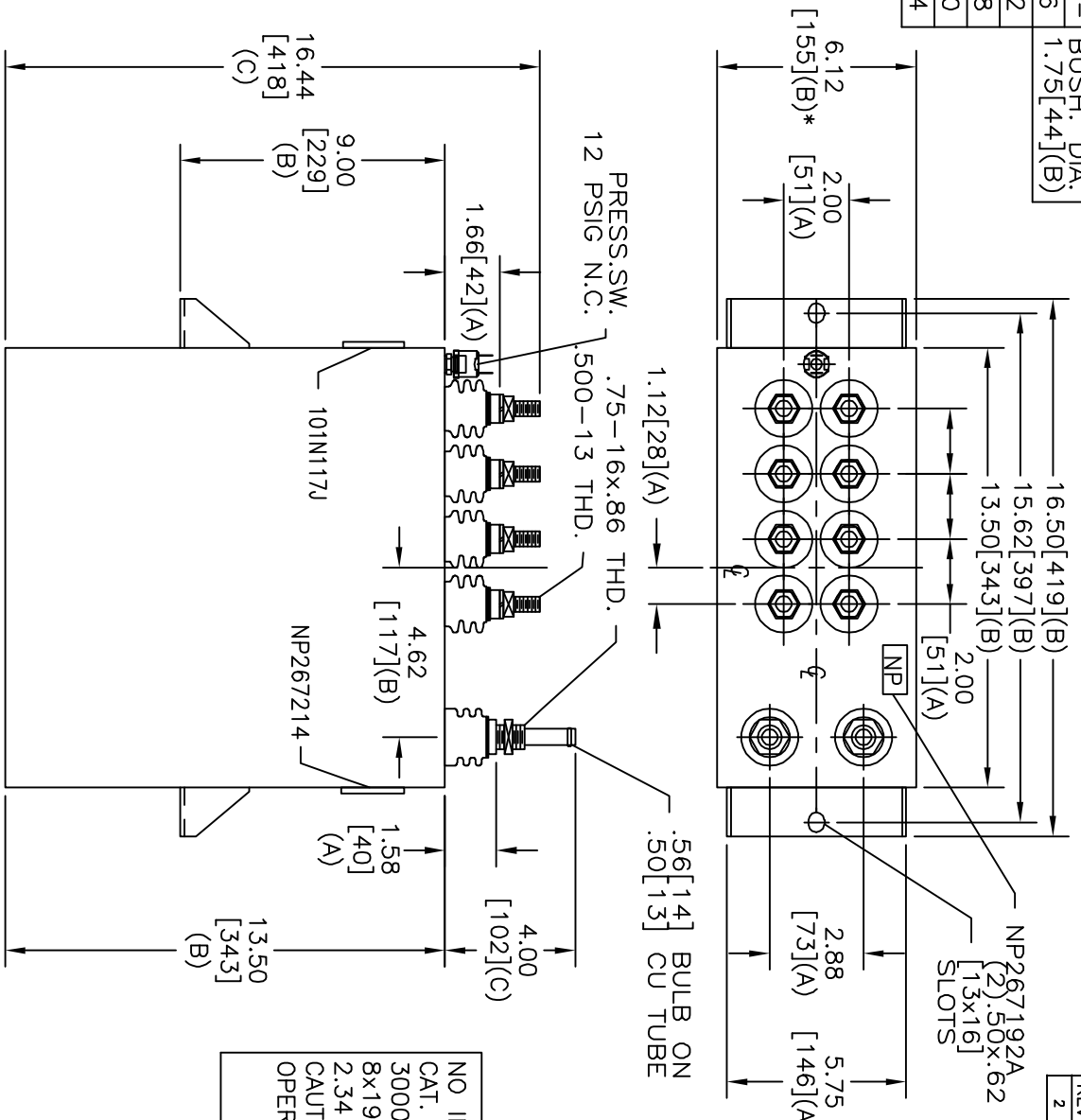
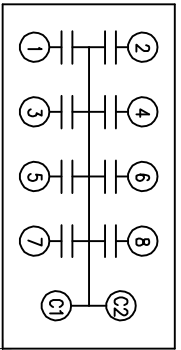


TOL	+/-	BUSH. DIA.
A	.06	1.75[44](B)
B	.12	
C	.18	
D	.50	
E	.04	



SIZE	DWG NO	SHT	REV
A	19L0295WH4	2	2
REV	DESCRIPTION	DATE	APPROVED
2	RETRACE	7/14/04	BTR

TERM	UF	KVAR
1	19.1	375
2	19.1	375
3	19.1	375
4	19.1	375
5	19.1	375
6	19.1	375
7	19.1	375
8	19.1	375



SCHEMATIC DIAGRAM - 800

NO INTERNAL DISCH RESISTORS  
 CAT. 19L0295WH4 SN  
 3000KVAR 1250V 2000HZ 1PH  
 8x19.1 UF/TAP  
 2.34 GAL. COMBUSTIBLE LIQUID  
 CAUTION! BEFORE INSTALLING OR  
 OPERATING READ GEH-2733  
 NP267214

\* UP TO +.50[13]  
 CASE BULGE

MAX. TERMINAL  
 TIGHTENING TORQUE  
 15 FT-LBS

NP267192A

**INDUSTRIAL SYSTEMS**  
 FORT EDWARD, N.Y., U.S.A.

DRAWN E. McGinn  
 DATE JUN 3, 1997

ISSUED DATE 6/4/97

SIZE A  
 SCALE

**OUTLINE**  
 19L0295WH4

SHEET 2 CONT 3

DISTR. TO