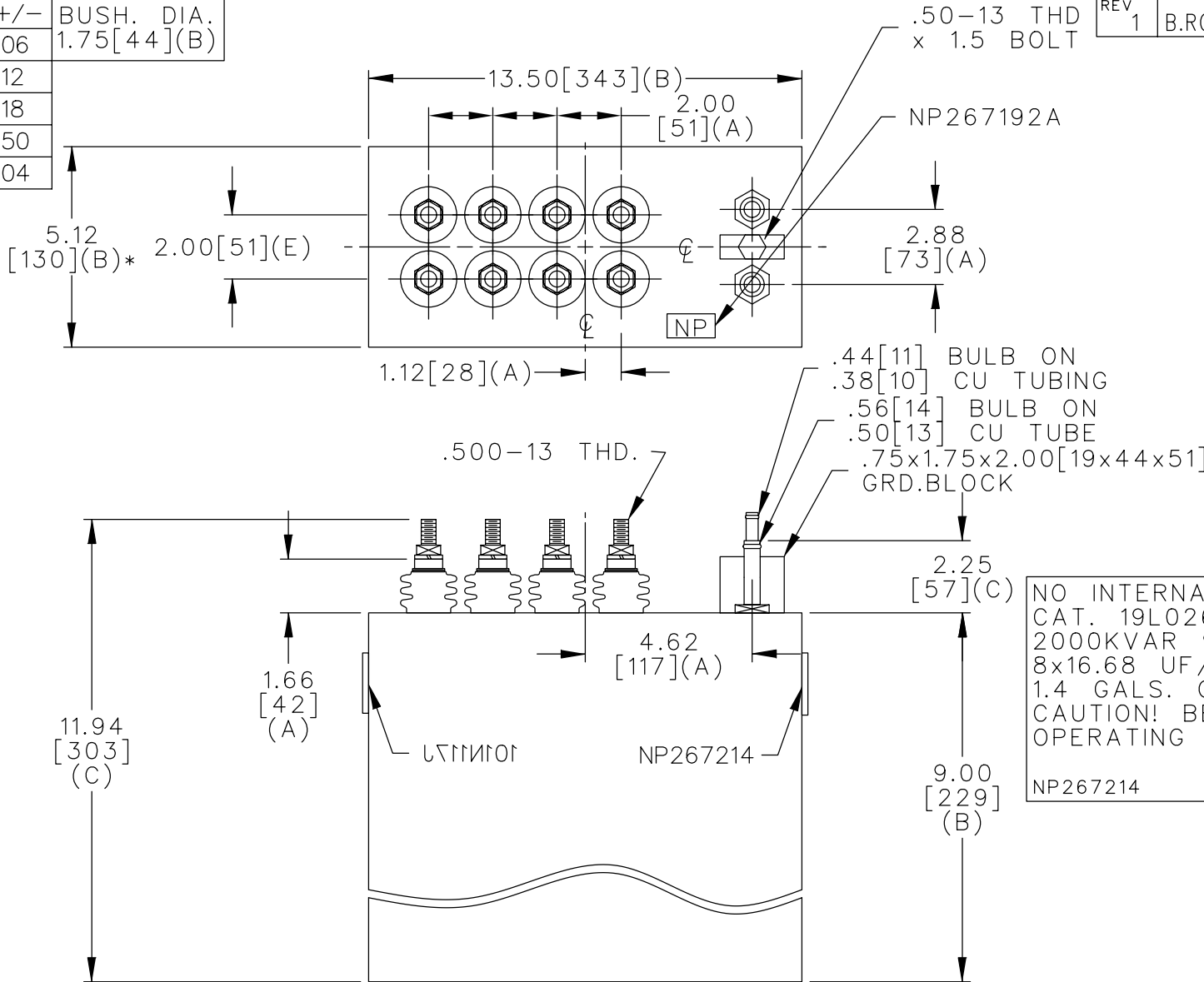
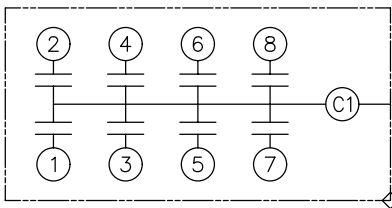


| | | |
|-----|-----|-------------|
| TOL | +/- | BUSH. DIA. |
| A | .06 | 1.75[44](B) |
| B | .12 | |
| C | .18 | |
| D | .50 | |
| E | .04 | |



| TERM | uF | kVAR |
|------|-------|------|
| 1 | 16.68 | 250 |
| 2 | 16.68 | 250 |
| 3 | 16.68 | 250 |
| 4 | 16.68 | 250 |
| 5 | 16.68 | 250 |
| 6 | 16.68 | 250 |
| 7 | 16.68 | 250 |
| 8 | 16.68 | 250 |



SCHEMATIC DIAGRAM - 806

NO INTERNAL DISCH RESISTORS
 CAT. 19L0261WH1 SN
 2000KVAR 940V 2700HZ 1PH
 8x16.68 UF/TAP
 1.4 GALS. COMBUSTIBLE LIQUID
 CAUTION! BEFORE INSTALLING OR
 OPERATING READ GEH-2733
 NP267214

* UP TO +.50[13]
 CASE BULGE

MAX. TERMINAL
 TIGHTENING TORQUE
 15 FT-LBS

NP267192A

| | | | | | | | |
|--------|---|---------------|------------------|-------------------------------------|--|------------|---------------|
| | CAPACITOR & POWER PROTECTION FORT EDWARD, N.Y., U.S.A. | | SIZE A | OUTLINE 19L0261WH1 | | SHEET 2 | CONT. ON - |
| | DRAWN E.McGINN | FEB. 18, 1997 | SCALE | | | | |
| ISSUED | 2-19-97 | | DISTR TO | | | | |