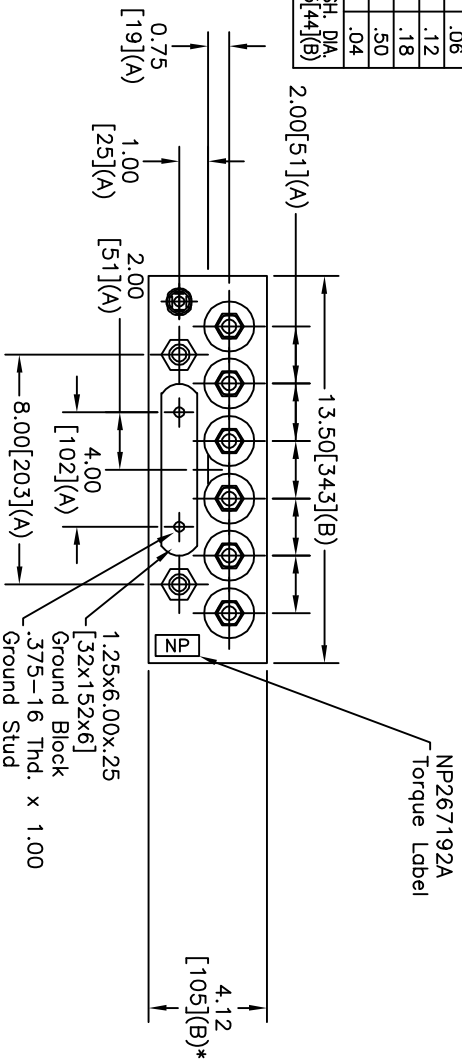
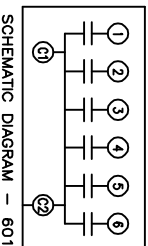
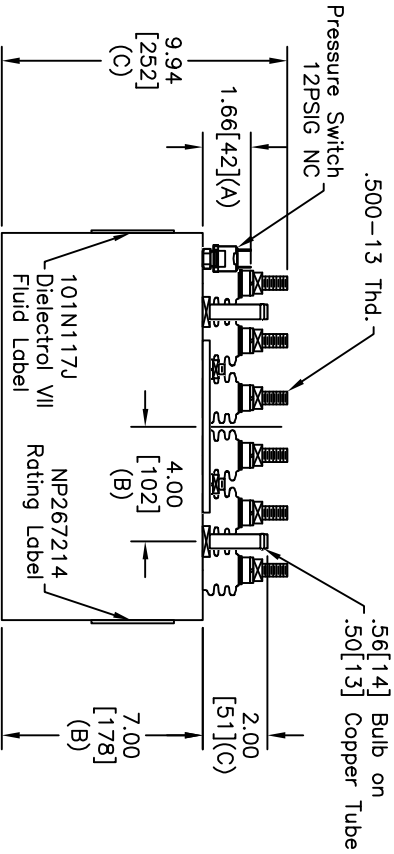


TOL	+/-
A	.06
B	.12
C	.18
D	.50
E	.04



TERM	UF	KVAR
1	0.26	10
2	0.52	20
3	1.04	40
4	2.08	80
5	3.89	150
6	3.89	150



SCHEMATIC DIAGRAM - 601

NO INTERNAL DISCH RESISTORS
 CAT. 19L0258WH2 SN
 450KVAR 800V 9600HZ 1PH
 .26+.52+1.04+2.08+2x3.89UF/TAP
 0.81 GAL. COMBUSTIBLE LIQUID
 CAUTION! BEFORE INSTALLING OR
 OPERATING READ GEH-2733
 MADE IN USA NP267214

SIZE	DWG NO	SHT	REV
A	19L0258WH2	2	3
REV	DESCRIPTION	DATE	APPROVED
3	Redrwn	1/16/2007	BTR

* UP TO +.50[13]
 CASE BULGE

MAX. TERMINAL
 TIGHTENING TORQUE
 15 FT-LBS.
 19L0258



GE ENERGY
 FORT EDWARD, N.Y., U.S.A.

ISSUED	DATE	DATE
ISSUED	10/21/1998	10/14, 1998

SIZE	SCALE	W/C9
A	SCALE	W/C9

Est Weight
 22 lbs.

OUTLINE
 19L0258WH2

SHEET	CONT
2	ON

DISTR. TO