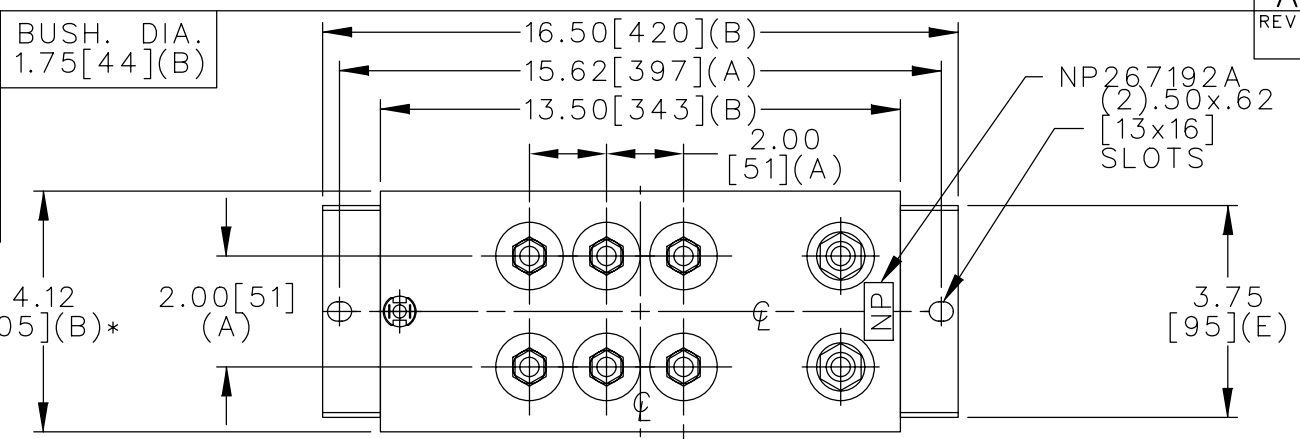
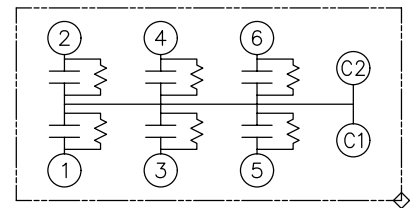
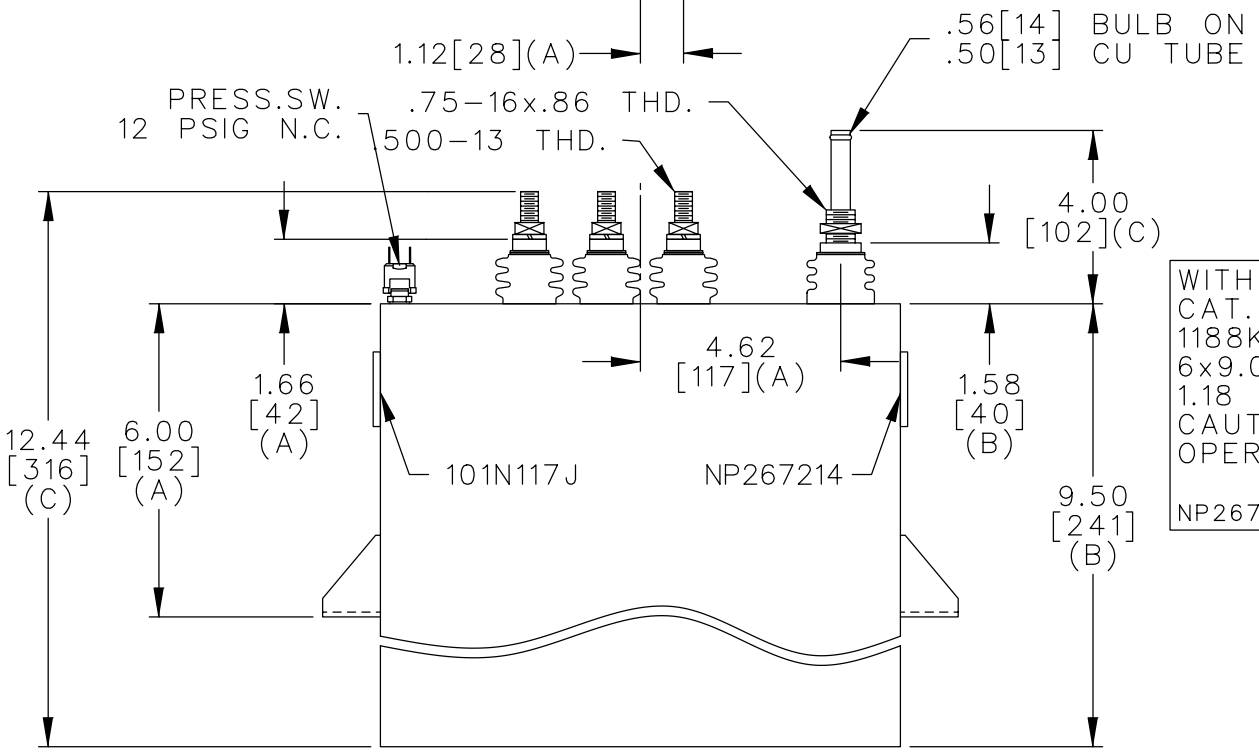


TOL	+/-
A	.06
B	.12
C	.18
D	.50
E	.04



TERM	uF	kVAR
1	9.04	198
2	9.04	198
3	9.04	198
4	9.04	198
5	9.04	198
6	9.04	198



SCHEMATIC DIAGRAM - 617

WITH INTERNAL DISCH RESISTORS
 CAT. 19L0213WH4 SN
 1188KVAR 660V 8000HZ 1PH
 6x9.04 UF/TAP
 1.18 GALS. COMBUSTIBLE LIQUID
 CAUTION! BEFORE INSTALLING OR
 OPERATING READ GEH-2733
 NP267214

* UP TO +.50 [13] CASE BULGE

MAX. TERMINAL TIGHTENING TORQUE 15 FT-LBS

NP267192A

	CAPACITOR & POWER PROTECTION FORT EDWARD, N.Y., U.S.A.		SIZE A	OUTLINE 19L0213WH4	SHEET 2 CONT. ON -
	DRAWN E.McGINN	JAN. 13, 1997	SCALE		
ISSUED					

DISTR TO